



Nova Basket

NB1 / NB3 / NB5 / NB10

Technical Data

STYLE		NB1	NB3	NB5	NB10
Composition		25%Polyester 75% PVC	25%Polyester 75% PVC	25%Polyester 75% PVC	25%Polyester 75% PVC
Openness Factor		≈1%	≈3%	≈5%	≈10%
UV Screen		Up to 99%	Up to 97%	Up to 94%	Up to 89%
Width	inch	79"-98"-118"	79"-98"-118"	79"-98"-118"	79"-98"-118"
	cm	200-250-300	200-250-300	200-250-300	200-250-300
Weight	oz/yd ²	14.17±5%	13.67 ± 5%	12.35 ± 5%	11.17±5%
	(ISO 2286-2) g/m ²	482 ± 5%	465 ± 5%	420 ± 5%	380 ± 5%
Thickness	inch	0.028 ± 5%	0.026 ± 5%	0.024 ± 5%	0.023 ± 5%
	(ISO 2286-3) mm	0.72 ± 5%	0.65 ± 5%	0.62 ± 5%	0.58 ± 5%
Mechanical Resistance					
Breaking (ISO 13934-1)	Warp	≥1900 N/5cm	≥1850 N/5cm	≥1550 N/5cm	≥1400 N/5cm
	Weft	≥1200 N/5cm	≥1400 N/5cm	≥1400 N/5cm	≥1300 N/5cm
Tear (ISO 4674)	Warp	≥110 N	≥135 N	≥125 N	≥128 N
	Weft	≥ 90 N	≥105 N	≥110 N	≥120 N
Packing (Roll Length)		32.8 yards 30 lm	32.8 yards 30 lm	32.8 yards 30 lm	32.8 yards 30 lm

Product Certificate

Fire, Smoke Classification	FR (US) - NFPA 701 TM#1 B1(CN) - GB50222	BS (GB) - 5867 Part2 TypeB
Health & Safety	Oeko-tex Standard 100 class IV RoHS Directive (EU)2015/863 AATCC112-2014	Greenguard® Gold EN71 Part 3:1994 GB18586 - 2001
Bacterial & Fungal Resistance	ASTM G21-09 ASTM E 2180-07 Reduce more than 99.9% of bacteria	
Colour fastness to light	Grade 8 ISO105 B02:2014 ≥4.0 AATCC TM 16.3-2014; Option 3; Xenon Arc Lamp	
Warranty	5 Years	



Thermal and Optical Factors

Color	Fabric Properties					Fabric & Glass	
	Thermal		Optical			SHGC % Improvement	SHGC
	Ts	Rs	As	Rv	Tv		

Recommended Comfort Classification				
Thermal Control	Visual			
	Daylight Utilization	Glare Control	Night Privacy	Outward Visibility

Nova Basket 1%

0101 White*White	16	72	12	74	13	56%	0.21
0102 White*Linen	17	65	18	68	13	53%	0.23
0103 White*Pearl	17	60	23	62	14	47%	0.24
0105 White*Grey	8	45	47	50	5	40%	0.25
0107 White*Sand	12	55	33	59	8	46%	0.23
0403 Black*Pearl	0	11	89	12	0	18%	0.34
0404 Black*Black	0	3	97	3	0	13%	0.36
0405 Black*Grey	0	8	92	8	0	16%	0.35
0406 Black*Brown	1	5	94	5	1	14%	0.35

2	2	1	2	1
2	2	1	2	1
2	2	1	2	1
2	1	2	2	1
2	1	2	2	1
2	0	3	3	1
1	0	3	3	1
1	0	3	3	1
1	0	3	3	1

Nova Basket 3%

0101 White*White	18	70	12	72	15	54%	0.23
0102 White*Linen	15	59	26	63	11	48%	0.24
0103 White*Pearl	14	52	34	57	11	44%	0.25
0105 White*Grey	9	40	51	44	7	36%	0.27
0107 White*Sand	14	51	35	54	10	42%	0.26
0403 Black*Pearl	4	13	83	15	4	19%	0.34
0404 Black*Black	3	3	94	3	3	13%	0.37
0405 Black*Grey	3	9	88	10	3	16%	0.35
0406 Black*Brown	3	6	91	6	3	14%	0.36

2	2	1	2	1
2	2	1	2	1
2	2	1	2	1
2	1	1	2	1
2	1	1	2	1
2	1	3	2	2
1	1	3	2	2
1	1	3	2	2
1	1	3	2	2

Nova Basket 5%

0101 White*White	21	67	12	69	17	51%	0.25
0102 White*Linen	18	56	26	60	14	46%	0.25
0103 White*Pearl	16	49	35	54	13	41%	0.27
0105 White*Grey	12	38	50	40	9	33%	0.30
0107 White*Sand	14	46	40	50	12	40%	0.28
0403 Black*Pearl	8	15	77	17	8	19%	0.35
0404 Black*Black	6	3	91	3	3	11%	0.37
0405 Black*Grey	7	3	90	3	7	12%	0.38
0406 Black*Brown	7	6	87	6	7	14%	0.38

2	2	0	1	1
2	2	0	1	1
2	2	0	1	2
2	1	0	1	2
2	1	0	1	2
1	1	1	1	3
1	1	1	1	3
1	1	1	1	3
1	1	1	1	3

Nova Basket 10%

0101 White*White	21	61	18	60	17	45%	0.26
0102 White*Linen	18	56	26	60	14	45%	0.26
0103 White*Pearl	16	49	35	54	13	41%	0.27
0105 White*Grey	18	36	46	38	15	31%	0.33
0107 White*Sand	18	48	34	23	12	40%	0.30
0403 Black*Pearl	12	17	71	19	10	18%	0.35
0404 Black*Black	10	3	87	3	6	10%	0.37
0405 Black*Grey	11	4	85	5	10	11%	0.38
0406 Black*Brown	11	5	84	8	10	13%	0.38

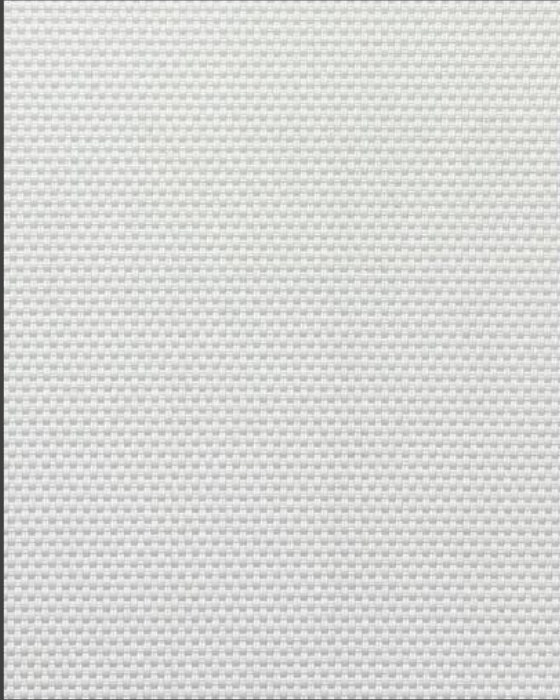
2	2	0	0	2
2	2	0	1	2
2	2	0	1	2
2	2	0	1	3
2	2	0	1	3
1	1	1	1	3
1	1	1	1	3
1	1	1	1	3
1	1	1	1	3

Ts (Solar transmittance): Proportion of solar energy transmitted through the fabric. Rs (Solar reflectance): Proportion of solar radiation reflected by the fabric. As (Solar absorptance): Proportion of solar radiation absorbed by the fabric. Tv (Visible light transmittance): Total percentage of light radiation through the fabric over a wavelength of 380 to 780 nm. Rv (visible light reflectance): Total percentage of light radiation reflected by the fabric over a wavelength of 380 to 780 nm. SHGC (Total solar factor): Solar energy which actually penetrates into a room through the blind and glazing. A low value means good thermal performance.

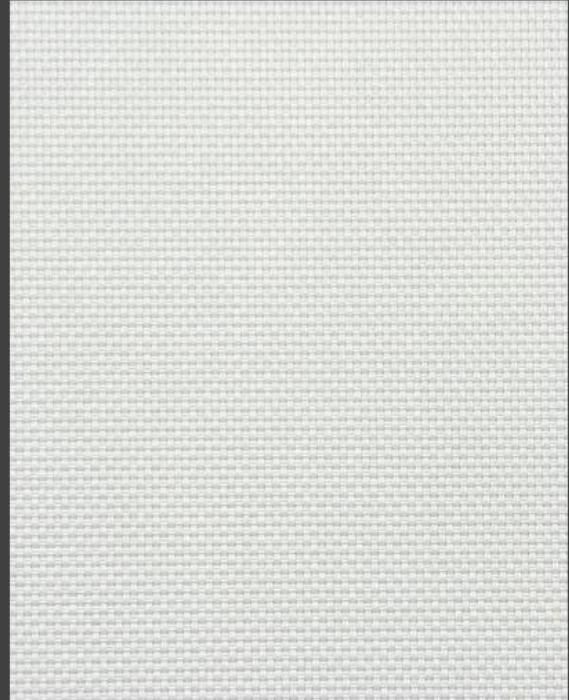
Comfort Classification According to EN14501 : 0. Very little effect 1. Little effect 2. Moderate effect 3. Good effect 4. Very good effect

Openness Factor

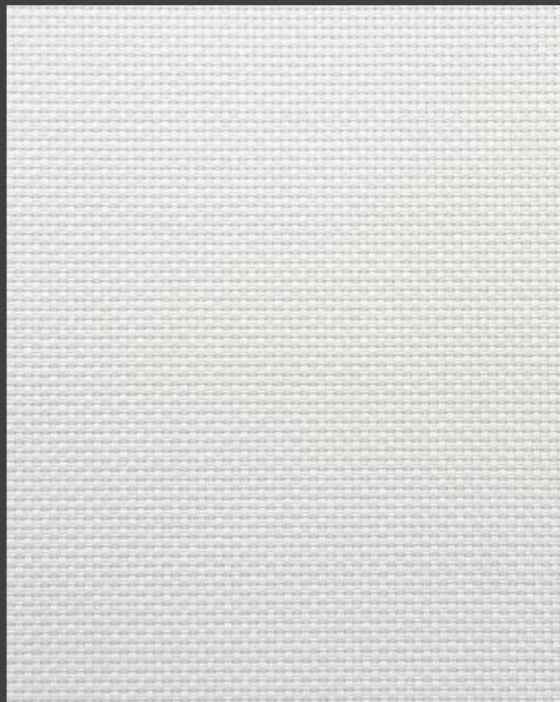
0101 White * White



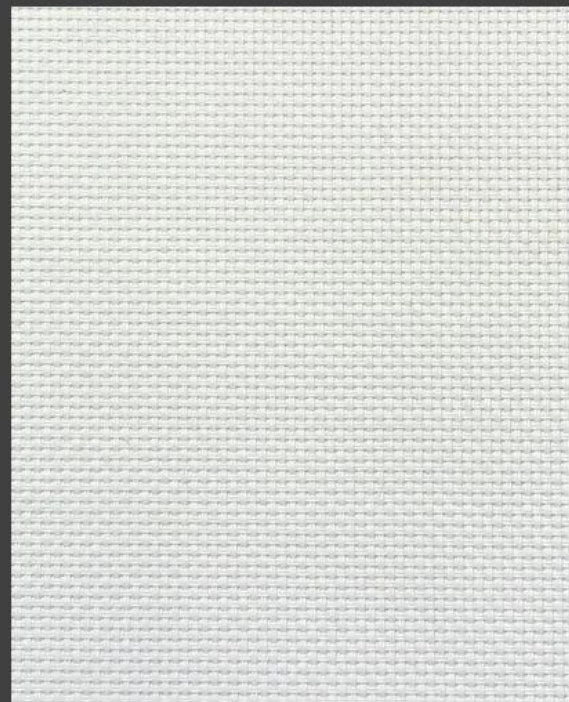
NB 1%



NB 3%



NB 5%

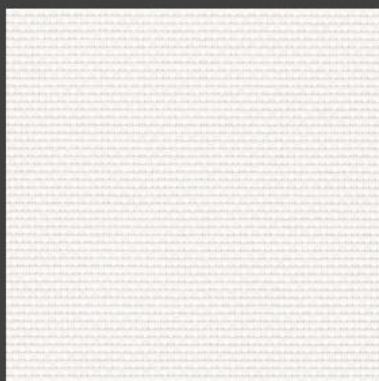


NB 10%

* Openness Factor may be slightly different from the actual ones

Colors

NB 3%



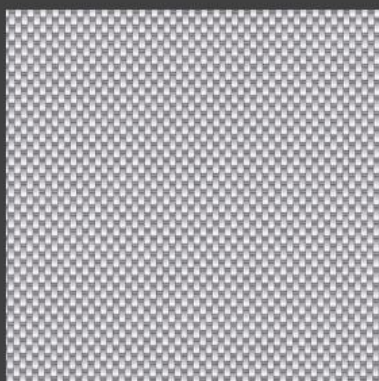
0101 White * White



0102 White * Linen



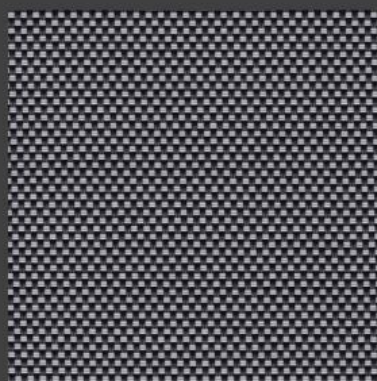
0103 White * Pearl



0105 White * Grey



0107 White * Sand



0403 Black * Pearl



0404 Black * Black



0405 Black * Grey



0406 Black * Brown

* Colours may be slightly different from the actual ones



Basket

B1 / B3 / B5 / B10

Product Certificate

Fire, Smoke Classification	FR (US) - NFPA 701 TM#1 B1(CN) - GB50222	BS (GB) - 5867 Part2 TypeB
Health & Safety	Oeko-tex Standard 100 class IV RoHS Directive (EU)2015/863 AATCC112-2014	Greenguard® Gold EN71 Part 3:1994 GB18586 - 2001
Bacterial & Fungal Resistance	ASTM G21-09 ASTM E 2180-07 Reduce more than 99.9% of bacteria	
Colour fastness to light	Grade 8 ISO105 B02:2014 ≥ 4.0 AATCC TM 16.3-2014; Option 3; Xenon Arc Lamp	
Warranty	5 Years	



Technical Data

STYLE		B1	B3	B5	B10
Composition		22%Polyester 78% PVC	22%Polyester 78% PVC	22%Polyester 78% PVC	22%Polyester 78% PVC
Openness Factor		≈1%	≈3%	≈5%	≈10%
UV Screen		Up to 99%	Up to 97%	Up to 94%	Up to 89%
Width	inch	98"–118"	98"–118"	98"–118"	98"–118"
	cm	250–300	250–300	250–300	250–300
Weight	oz/yd ²	14.55±5%	14.26 ± 5%	13.52 ± 5%	12.05±5%
	(ISO 2286–2) g/m ²	495 ± 5%	485 ± 5%	460 ± 5%	410 ± 5%
Thickness	inch	0.028 ± 5%	0.024 ± 5%	0.024 ± 5%	0.024 ± 5%
	(ISO 2286–3) mm	0.72 ± 5%	0.60 ± 5%	0.62 ± 5%	0.60 ± 5%
Mechanical	Resistance				
Breaking (ISO 13934–1)	Warp	≥ 1900 N/5cm	≥ 1600 N/5cm	≥ 1550 N/5cm	≥ 1300 N/5cm
	Weft	≥ 1100 N/5cm	≥ 1500 N/5cm	≥ 1300 N/5cm	≥ 1200 N/5cm
Tear (ISO 4674)	Warp	≥ 110 N	≥ 130 N	≥ 100 N	≥ 110 N
	Weft	≥ 60 N	≥ 90 N	≥ 80 N	≥ 90 N
Packing (Roll Length)		32.8 yards 30 lm	32.8 yards 30 lm	32.8 yards 30 lm	32.8 yards 30 lm

Thermal and Optical Factors

Color	Fabric Properties					Fabric & Glass	
	Thermal			Optical		SHGC % Improvement	SHGC
	Ts	Rs	As	Rv	Tv		

Thermal Control	Recommended Comfort Classification			
	Visual			
	Daylight Utilization	Glare Control	Night Privacy	Outward Visibility

Basket 1%

0101 White*White	15	72	13	74	13	56%	0.21
0102 White*Linen	17	65	18	68	13	53%	0.23
0103 White*Pearl	17	60	23	62	14	47%	0.24
0104 White*Black	3	25	72	35	3	40%	0.28
0105 White*Grey	8	45	47	50	5	40%	0.25
0107 White*Sand	12	55	33	59	8	46%	0.23
0403 Black*Pearl	0	10	89	12	0	18%	0.34
0404 Black*Black	0	3	97	3	0	13%	0.36
0406 Black*Brown	1	5	94	5	1	14%	0.35

2	2	1	2	1
2	2	1	2	1
2	2	1	2	1
2	1	2	2	1
2	1	2	2	1
2	1	2	2	1
2	0	3	3	1
1	0	3	3	1
1	0	3	3	1

Basket 3%

0101 White*White	17	71	12	74	24	46%	0.26
0102 White*Linen	20	66	14	74	16	48%	0.25
0103 White*Pearl	15	58	27	66	12	46%	0.26
0104 White*Black	8	26	66	40	7	40%	0.29
0105 White*Grey	9	49	42	55	7	44%	0.27
0107 White*Sand	18	59	23	62	13	46%	0.26
0403 Black*Pearl	6	14	80	15	6	38%	0.30
0404 Black*Black	5	3	92	3	5	35%	0.31
0406 Black*Brown	6	8	86	7	5	38%	0.30

2	2	1	2	1
2	2	1	2	1
2	2	1	2	1
2	1	1	2	1
2	1	1	2	1
2	1	1	2	1
2	1	3	2	2
1	1	3	2	2
1	1	3	2	2

Basket 5%

0101 White*White	19	72	9	80	15	48%	0.25
0102 White*Linen	22	63	15	71	18	48%	0.25
0103 White*Pearl	18	57	25	65	15	46%	0.26
0104 White*Black	12	27	61	45	11	40%	0.29
0105 White*Grey	12	44	44	51	10	44%	0.27
0107 White*Sand	20	59	21	63	16	46%	0.26
0403 Black*Pearl	10	14	76	17	10	38%	0.30
0404 Black*Black	7	3	90	3	7	35%	0.31
0406 Black*Brown	8	5	87	6	8	35%	0.31

2	2	0	1	1
2	2	0	1	1
2	2	0	1	2
2	1	0	1	2
2	1	0	1	2
2	1	0	1	2
1	1	1	1	3
1	1	1	1	3
1	1	1	1	3

Basket 10%

0101 White*White	23	66	11	75	19	48%	0.25
0102 White*Linen	25	60	15	68	21	46%	0.26
0103 White*Pearl	24	52	24	60	21	46%	0.26
0104 White*Black	19	23	58	47	18	40%	0.29
0105 White*Grey	18	43	39	50	15	44%	0.27
0107 White*Sand	26	55	19	60	21	46%	0.26
0403 Black*Pearl	16	14	70	17	15	38%	0.30
0404 Black*Black	13	3	84	3	13	35%	0.31
0406 Black*Brown	14	7	79	6	13	38%	0.30

2	2	0	0	2
2	2	0	1	2
2	2	0	1	2
2	2	0	1	3
2	2	0	1	3
2	2	0	1	3
1	1	1	1	3
1	1	1	1	3
1	1	1	1	3

Ts (Solar transmittance): Proportion of solar energy transmitted through the fabric. Rs (Solar reflectance): Proportion of solar radiation reflected by the fabric. As (Solar absorptance): Proportion of solar radiation absorbed by the fabric. Tv (Visible light transmittance): Total percentage of light radiation through the fabric over a wavelength of 380 to 780 nm. Rv (visible light reflectance): Total percentage of light radiation reflected by the fabric over a wavelength of 380 to 780 nm. SHGC (Total solar factor): Solar energy which actually penetrates into a room through the blind and glazing. A low value means good thermal performance.

Comfort Classification According to EN14501 : 0. Very little effect 1. Little effect 2. Moderate effect 3. Good effect 4. Very good effect

Advantage

B 1%-3%

Tight Basket Weave That Combine Visual Comfort With Transparency

- Tight Basket Weave For EXCELLENT CONTROL OF GLARE. Up To 100% Of Light Rays Filtered($T_v \approx 0\%$)
- Benefit To Internal Thermal Comfort: Up To 79% Of Solar Energy($SHGC=0.21$)

B 5%-10%

Open Basket Weave Design For Optimum Transparency And Control Of Natural Light

- **MAXIMUM TRANSPARENCY:** Excellent Vision To The Outside With Optimal Control Of Incoming Natural Light. Helps To Improve The Energy Efficiency Of Buildings
- Good Glare Control: Up To 93% Of Light Rays ($T_v = 7\%$)

- 9 COLORS Available In 2 Widths: 250cm And 300cm
- COORDINATED RANGE WITH A VARIETY OF OPENNESS FACTORS (B 1%, B 3%, B 5% And B 10%) To Optimize Solar Protection In All Applications, Maintaining A Consistent Design Aesthetic
- Excellent MECHANICAL RESISTANCE And Dimensional Stability For Large Roller Blinds
- Health & Safty: Conforms To Standard Requirements For Buildings Open To The Public
- Excellent DIGITAL PRINTING MEDIUM For Custom Designs

Solar Fenestration Properties Comparison

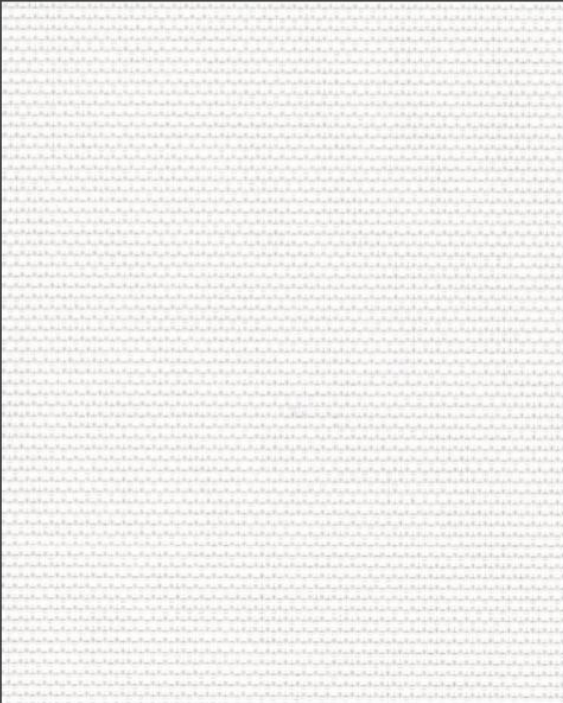
Basket 5% 2X2 White*White

Product	Range	Style	Thermal Factors			Optical Factors	SHGC
			Rs (%)	As (%)	Ts (%)	Tv (%)	
HanDe	B5	Basket 5% 2X2 White*White	72	9	19	15	0.32
	NB5*		67	7	26	23	0.33
A*	3000 N		66	14	20	12	0.32
B*	2000		67	11	22	19	0.34
P*	2000		67	13	20	16	0.30
M*	7505		71	9	20	17	0.28

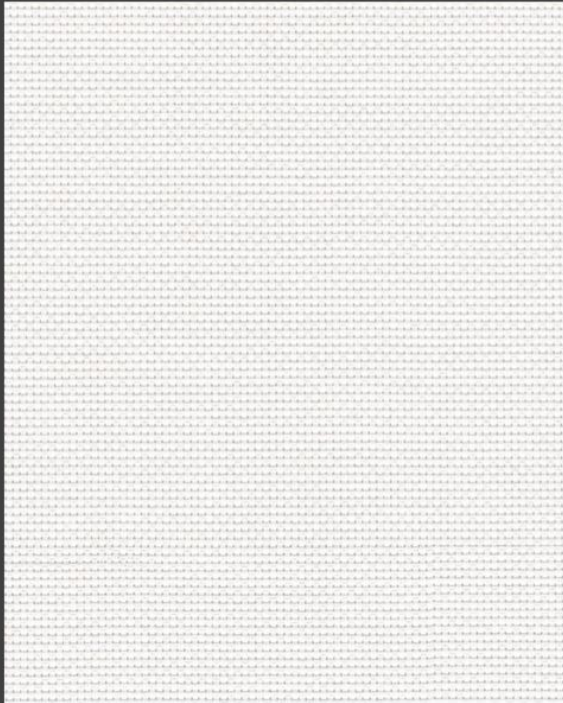
Non binding document

Openness Factor

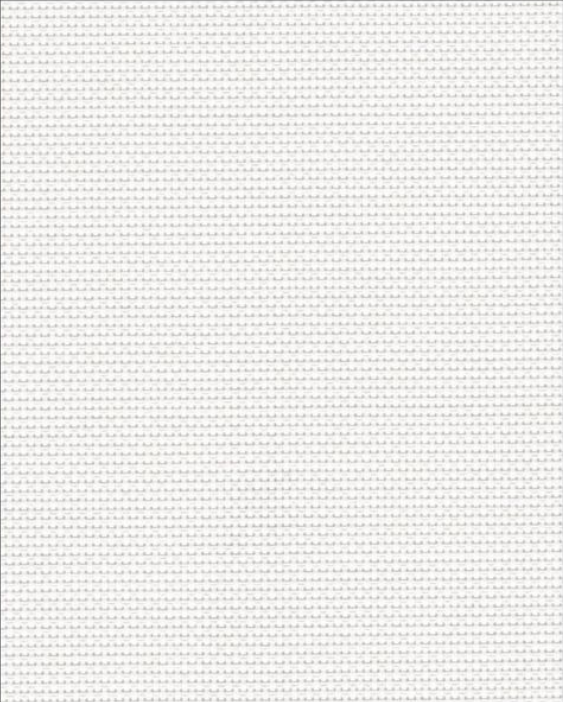
0101 White * White



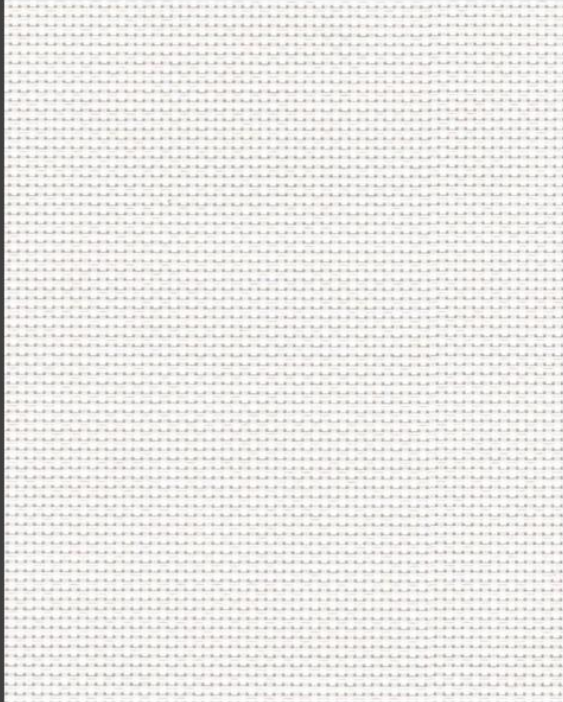
B 1%



B 3%



B 5%

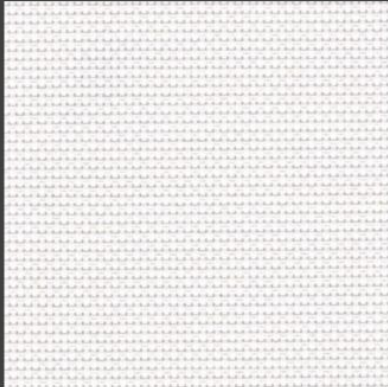


B 10%

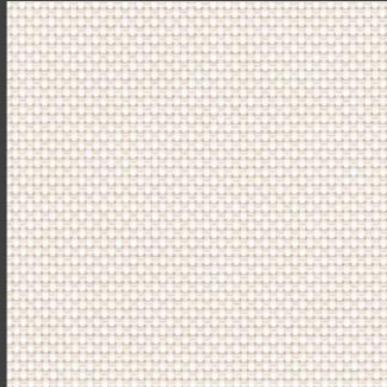
Openness Factor may be slightly different from the actual ones

Colours

B 5%



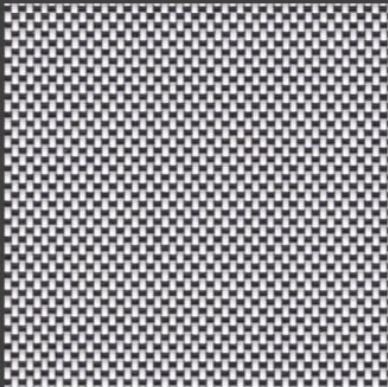
0101 White * White



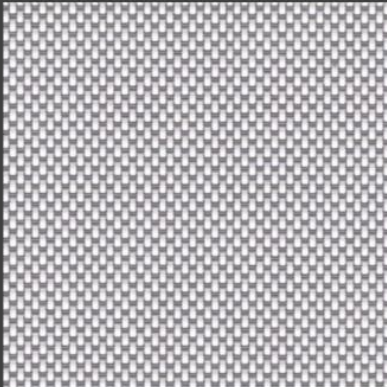
0102 White * Linen



0103 White * Pearl



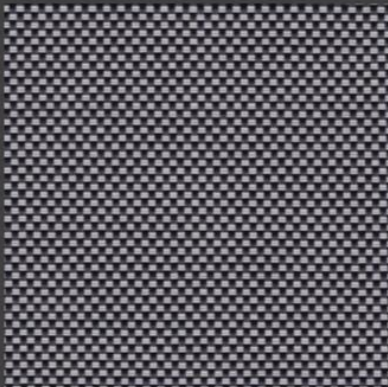
0104 White * Black



0105 White * Grey



0107 White * Sand



0403 Black * Pearl




0404 Black * Black



0406 Black * Brown

* Colours may be slightly different from the actual ones



Nova Twill

NT1 / NT3

Thermal and Optical Factors

Color	Side	Fabric Properties					Fabric & Glass	
		Thermal			Optical		SHGC % Improvement	SHGC
		Ts	Rs	As	Rv	Tv		

Recommended Comfort Classification				
Thermal Control	Visual			
	Daylight Utilization	Glare Control	Night Privacy	Outward Visibility

Nova Twill 1%

0101 White*White	A	17	66	17	73	14	55%	0.22
0102 White*Linen	A	17	66	17	73	14	55%	0.22
	B	15	63	22	68	11	52%	0.22
0103 White*Pearl	A	15	57	28	60	11	46%	0.24
	B	14	60	26	66	11	51%	0.22
0104 White*Black	A	7	47	46	47	6	42%	0.27
	B	9	22	69	32	8	30%	0.29
0105 White*Grey	A	11	54	35	60	7	47%	0.23
	B	11	36	53	38	7	33%	0.29
0107 White*Sand	A	14	60	26	65	10	50%	0.22
	B	14	49	37	50	10	40%	0.26
0403 Black*Pearl	A	0	6	94	6	0	15%	0.35
	B	0	16	84	18	0	21%	0.32
0404 Black*Black	A	0	3	97	3	0	13%	0.36
0406 Black*Brown	A	0	4	96	4	0	14%	0.36
	B	0	6	94	6	0	15%	0.35

2	2	1	2	0
2	2	1	2	1
2	2	1	2	1
2	1	3	2	2
2	1	2	2	1
2	1	2	2	1
1	1	3	3	1
1	1	3	3	1
1	1	3	3	1

Nova Twill 3%

0101 White*White	A	19	64	17	71	16	53%	0.23
0102 White*Linen	A	19	63	18	67	13	53%	0.23
	B	17	62	21	59	13	45%	0.25
0103 White*Pearl	A	17	56	27	64	12	49%	0.24
	B	15	58	27	53	12	41%	0.27
0104 White*Black	A	8	43	49	34	7	39%	0.27
	B	9	20	71	8	8	27%	0.29
0105 White*Grey	A	15	48	37	57	7	45%	0.24
	B	11	52	37	36	7	31%	0.30
0107 White*Sand	A	11	34	55	62	11	48%	0.24
	B	15	58	27	48	11	38%	0.28
0403 Black*Pearl	A	15	47	38	7	2	15%	0.36
	B	2	6	92	20	2	22%	0.32
0404 Black*Black	A	2	17	81	3	2	13%	0.37
0406 Black*Brown	A	2	4	94	4	2	14%	0.36
	B	2	7	91	7	2	15%	0.36

2	2	1	2	0
2	2	1	2	1
2	2	1	2	1
2	1	2	2	2
2	1	1	2	1
2	2	1	2	1
1	1	2	2	1
1	1	2	2	1
1	1	2	2	1

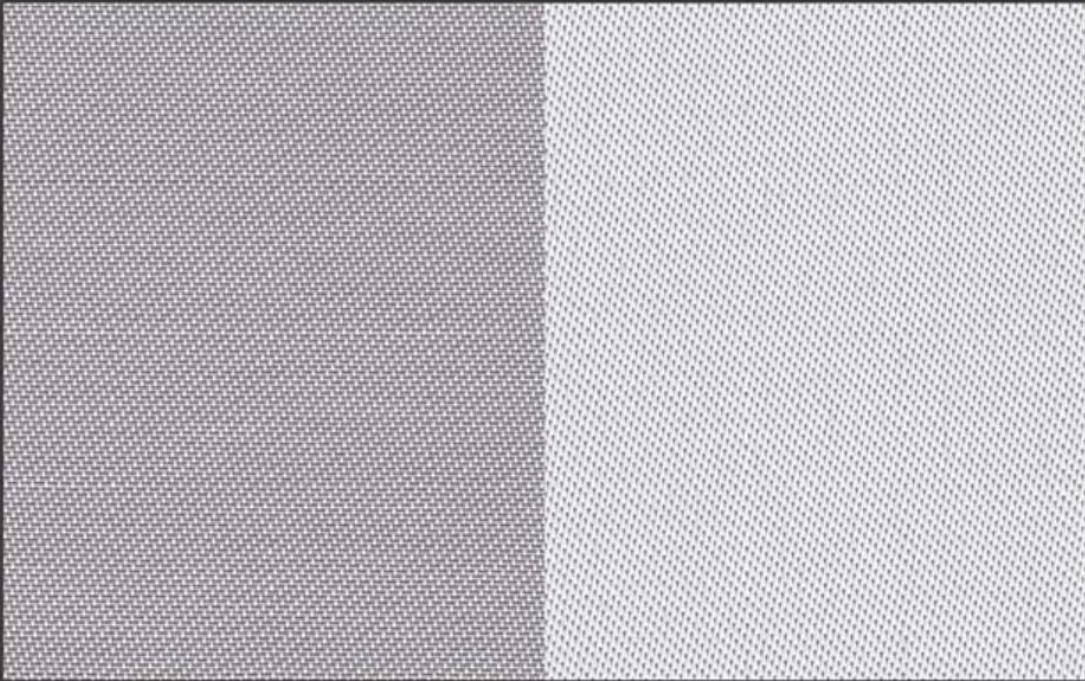
Ts (Solar transmittance): Proportion of solar energy transmitted through the fabric. Rs (Solar reflectance): Proportion of solar radiation reflected by the fabric. As (Solar absorptance): Proportion of solar radiation absorbed by the fabric. Tv (Visible light transmittance): Total percentage of light radiation through the fabric over a wavelength of 380 to 780 nm. Rv (visible light reflectance): Total percentage of light radiation reflected by the fabric over a wavelength of 380 to 780 nm. SHGC (Total solar factor): Solar energy which actually penetrates into a room through the blind and glazing. A low value means good thermal performance.

Comfort Classification According to EN14501 : ● Very little effect ● Little effect ● Moderate effect ● Good effect ● Very good effect

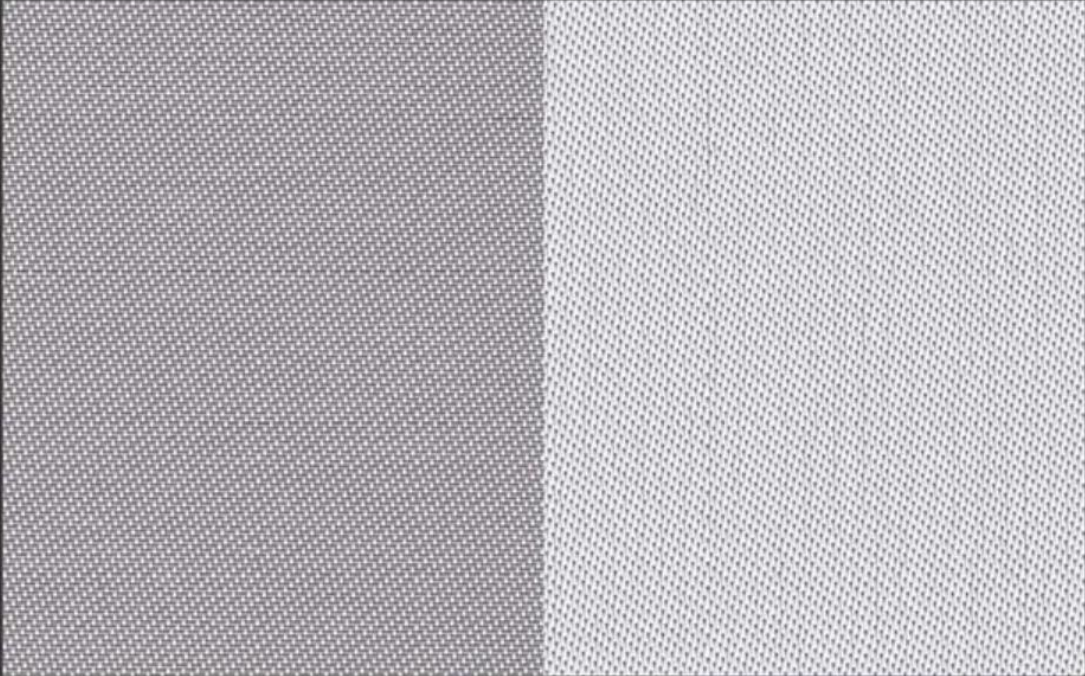
Openness Factor

0105 White * Grey

NT 1%



NT 3%



Openness Factor may be slightly different from the actual ones

Colours

NT 3%



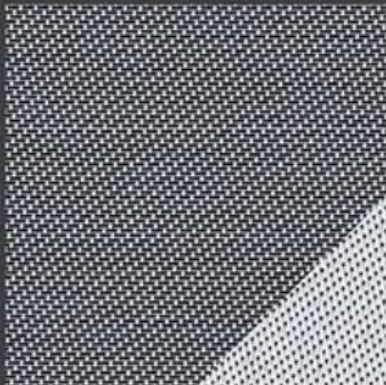
0101 White * White



0102 White * Linen



0103 White * Pearl



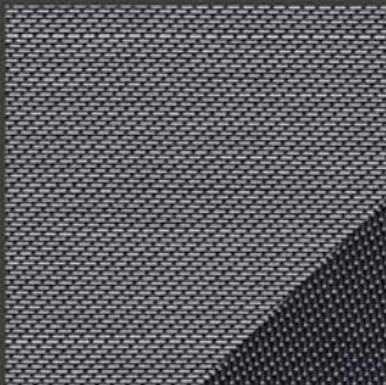
0104 White * Black



0105 White * Grey



0107 White * Sand



0403 Black * Pearl



0404 Black * Black

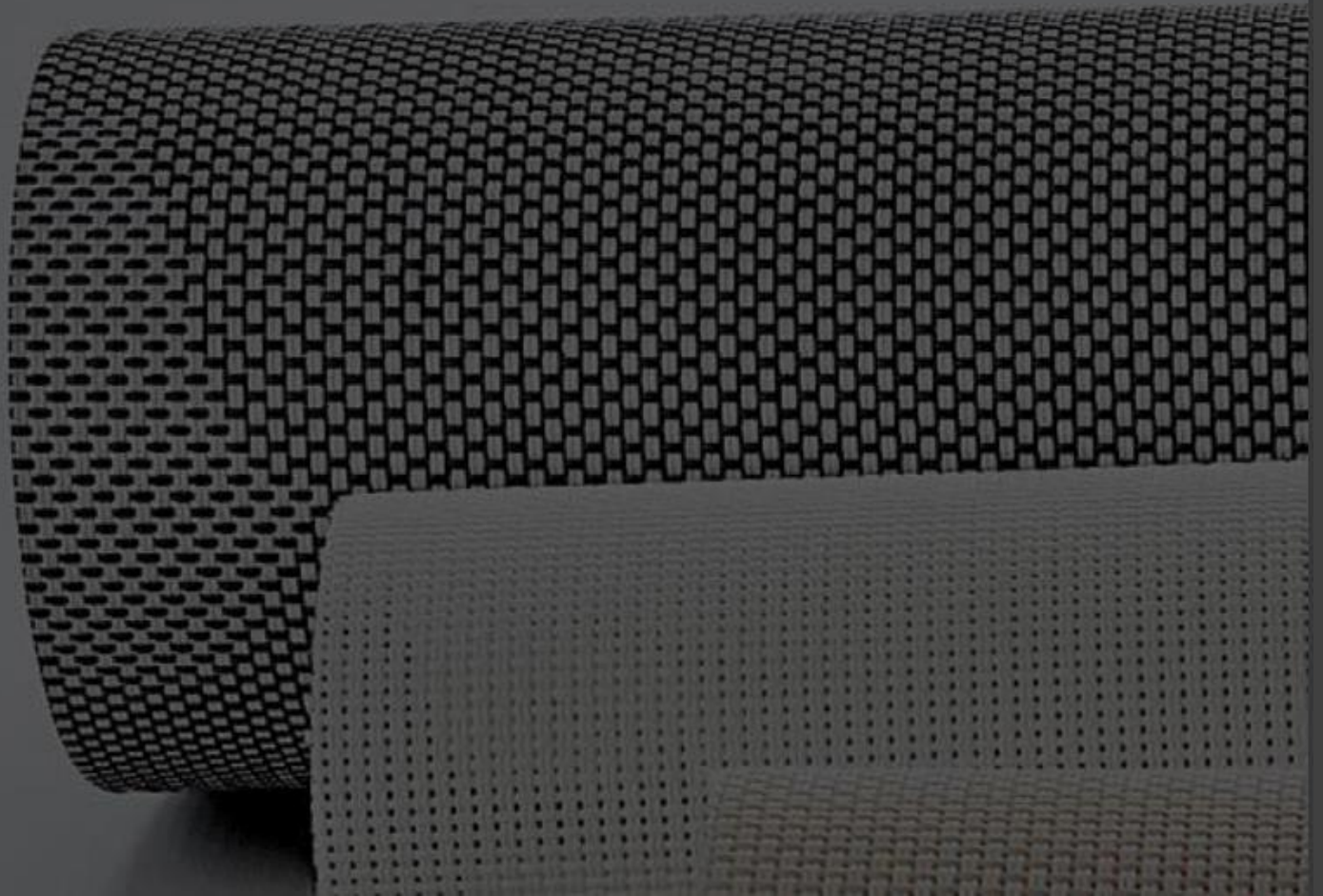


0406 Black * Brown

* Colours may be slightly different from the actual ones

Flat Basket

FB3 / FB5 / FB10



Product Certificate

Fire, Smoke Classification	FR (US) - NFPA 701 TM#1 B1(CN) - GB50222	BS (GB) - 5867 Part2 TypeB
Health & Safety	Oeko-tex Standard 100 class M RoHS Directive (EU)2015/863 AATCC112-2014	Greenguard® Gold EN71 Part 3:1994 GB18586 - 2001
Bacterial & Fungal Resistance	ASTM G21-09 ASTM E 2180-07 Reduce more than 99.9% of bacteria	
Colour fastness to light	Grade 8 ISO105 B02:2014 ≥4.0 AATCC TM 16.3-2014; Option 3; Xenon Arc Lamp	
Warranty	5 Years	



Technical Data

STYLE		FB3	FB5	FB10
Composition		25%Polyester 75% PVC	25%Polyester 75% PVC	25%Polyester 75% PVC
Openness Factor		≈3%	≈5%	≈10%
UV Screen		Up to 97%	Up to 94%	Up to 90%
Width	inch	98"-118"	98"-118"	98"-118"
	cm	250-300	250-300	250-300
Weight	oz/yd ²	12.20 ± 5%	12.05 ± 5%	10.88±5%
	(ISO 2286-2) g/m ²	415 ± 5%	410 ± 5%	370 ± 5%
Thickness	inch	0.023 ± 5%	0.023 ± 5%	0.023 ± 5%
	(ISO 2286-3) mm	0.58 ± 5%	0.58 ± 5%	0.58 ± 5%
Mechanical		Resistance		
Breaking (ISO 13934-1)	Warp	≥1600 N/5cm	≥1600 N/5cm	≥1500 N/5cm
	Weft	≥1100 N/5cm	≥1100 N/5cm	≥ 900 N/5cm
Tear (ISO 4674)	Warp	≥60 N	≥60 N	≥90 N
	Weft	≥40 N	≥40 N	≥40 N
Packing (Roll Length)		32.8 yards 30 lm	32.8 yards 30 lm	32.8 yards 30 lm

Thermal and Optical Factors

Color	Fabric Properties					Fabric & Glass	
	Thermal			Optical		SHGC % Improvement	SHGC
	Ts	Rs	As	Rv	Tv		

Flat Basket 3%

0101 White*White	18	65	17	72	15	54%	0.23
0105 White*Grey	9	42	49	46	6	37%	0.27
0282 White*Linon	15	59	26	63	11	48%	0.23

Flat Basket 5%

0101 White*White	19	63	18	70	16	53%	0.24
0105 White*Grey	12	43	45	47	9	38%	0.28
0282 White*Linon	17	57	26	62	13	47%	0.25

Flat Basket 10%

0101 White*White	25	62	13	67	22	49%	0.27
0105 White*Grey	21	41	38	44	19	34%	0.32
0282 White*Linon	24	54	22	58	21	43%	0.29

Recommended Comfort Classification				
Thermal Control	Visual			
	Daylight Utilization	Glare Control	Night Privacy	Outward Visibility

2	2	1	1	1
2	1	1	1	1
2	2	1	1	1

2	2	0	1	1
2	1	1	1	2
2	2	0	1	1

2	2	0	0	2
2	2	0	0	3
2	2	0	0	2

Ts (Solar transmittance): Proportion of solar energy transmitted through the fabric. Rs (Solar reflectance): Proportion of solar radiation reflected by the fabric. As (Solar absorptance): Proportion of solar radiation absorbed by the fabric. Tv (Visible light transmittance): Total percentage of light radiation through the fabric over a wavelength of 380 to 780 nm. Rv (visible light reflectance): Total percentage of light radiation reflected by the fabric over a wavelength of 380 to 780 nm. SHGC (Total solar factor): Solar energy which actually penetrates into a room through the blind and glazing. A low value means good thermal performance.

Comfort Classification According to EN14501: **0**: Very little effect **1**: Little effect **2**: Moderate effect **3**: Good effect **4**: Very good effect

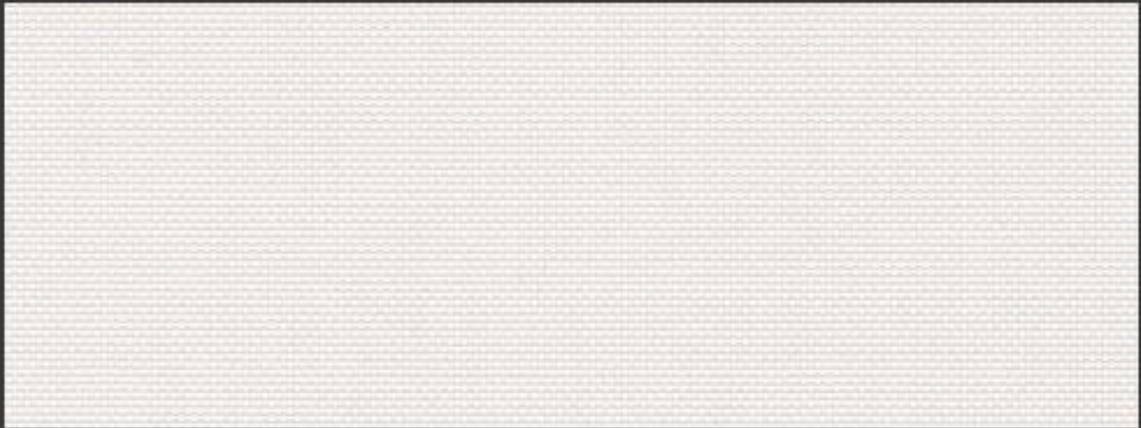
Openness Factor

0101 White * White

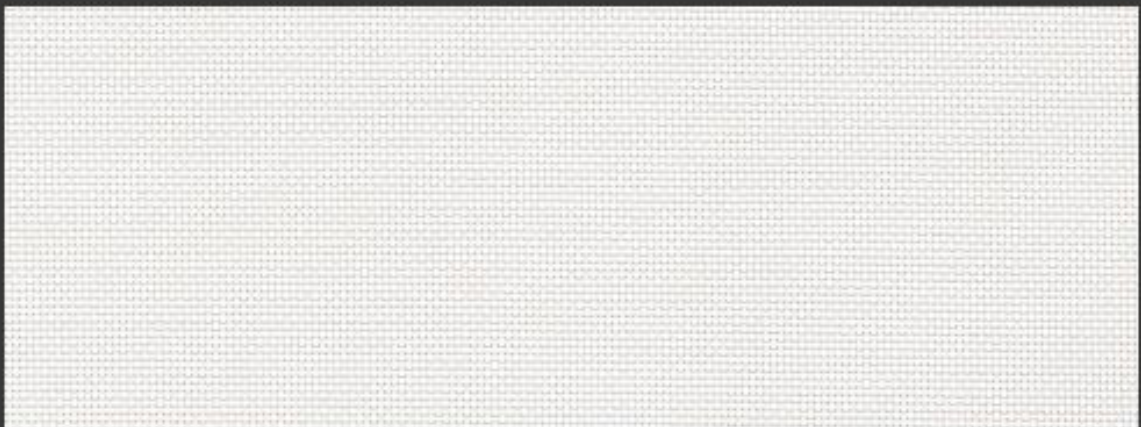
FB 3%



FB 5%



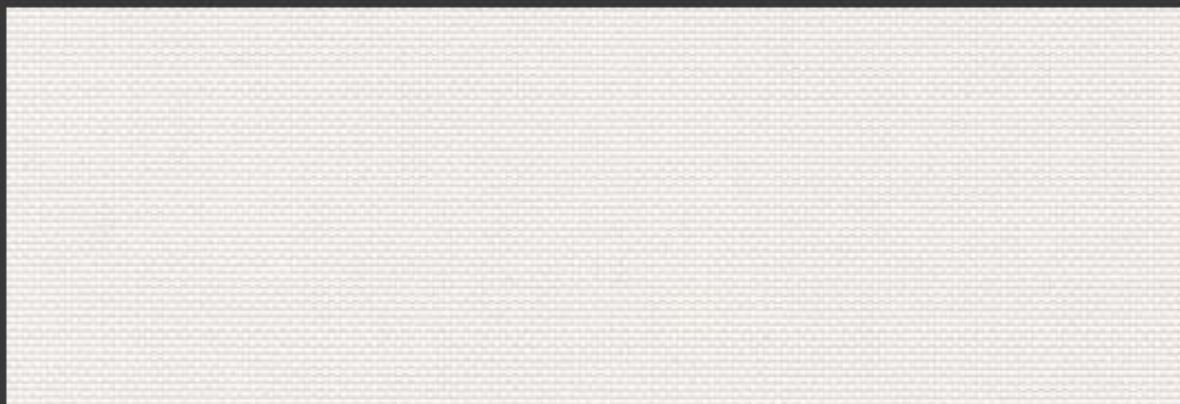
FB 10%



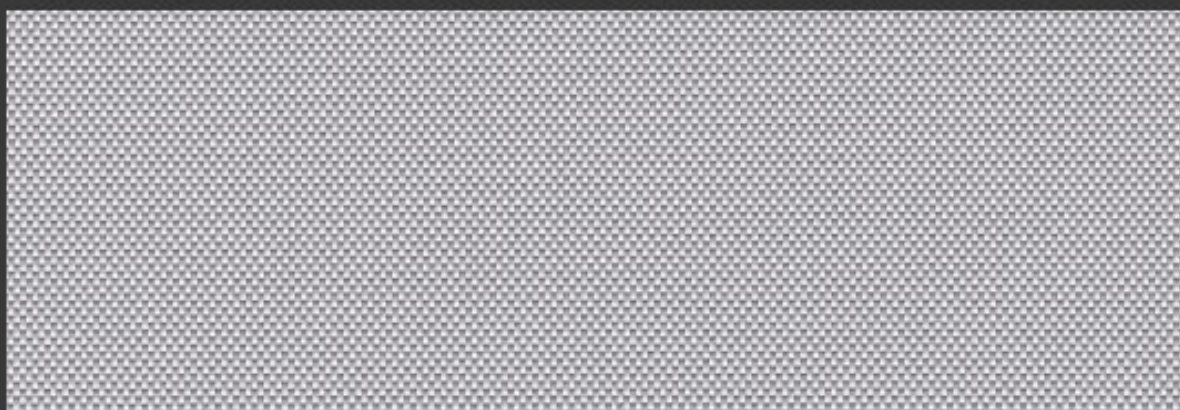
* OpennessFactor may be slightly different from the actual ones

Colours

FB 5%



0101 White * White

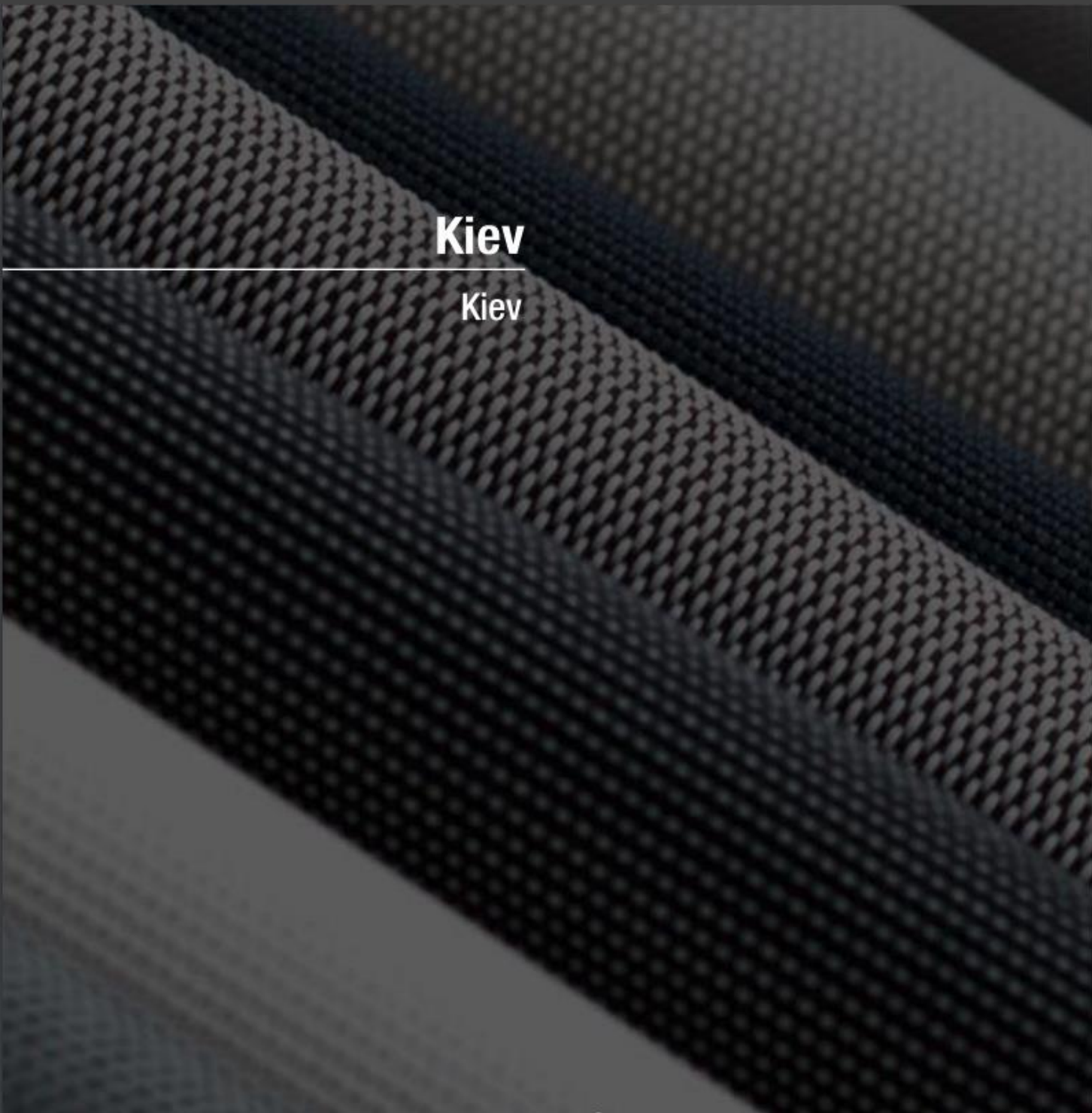


0105 White * Grey



0282 White * Linen

* Colours may be slightly different from the actual ones



Kiev

Kiev

Product Certificate

Fire, Smoke Classification	FR (US) - NFPA 701 TM#1 B1(CN) - GB50222	BS (GB) - 5867 Part2 TypeB
Health & Safety	Oeko-tex Standard 100 class IV RoHS Directive (EU)2015/863 AATCC112-2014	Greenguard® Gold EN71 Part 3:1994 GB18586 - 2001
Bacterial & Fungal Resistance	ASTM G21-09 ASTM E 2180-07 Reduce more than 99.9% of bacteria	
Colour fastness to light	Grade 8 ISO105 B02:2014 ≥4.0 AATCC TM 16.3-2014; Option 3; Xenon Arc Lamp	
Warranty	5 Years	



Technical Data

STYLE		Kiev
Composition		25%Polyester 75% PVC
Openness Factor		≈ 3%
UV Screen		Up to 97%
Width	inch	98"-118"
	cm	250-300
Weight	oz/yd ²	14.26 ± 5%
	(ISO 2286-2) g/m ²	485 ± 5%
Thickness	inch	0.028 ± 5%
	(ISO 2286-3) mm	0.70 ± 5%
Mechanical	Resistance	
Breaking (ISO 13934-1)	Warp	≥ 1800 N/5cm
	Weft	≥ 1550 N/5cm
Tear (ISO 4674)	Warp	≥ 105 N
	Weft	≥ 85 N
Packing (Roll Length)		32.8 yards
		30 Im

Thermal and Optical Factors

Color	Fabric Properties					Fabric & Glass	
	Thermal			Optical		SHGC % Improvement	SHGC
	Ts	Rs	As	Rv	Tv		

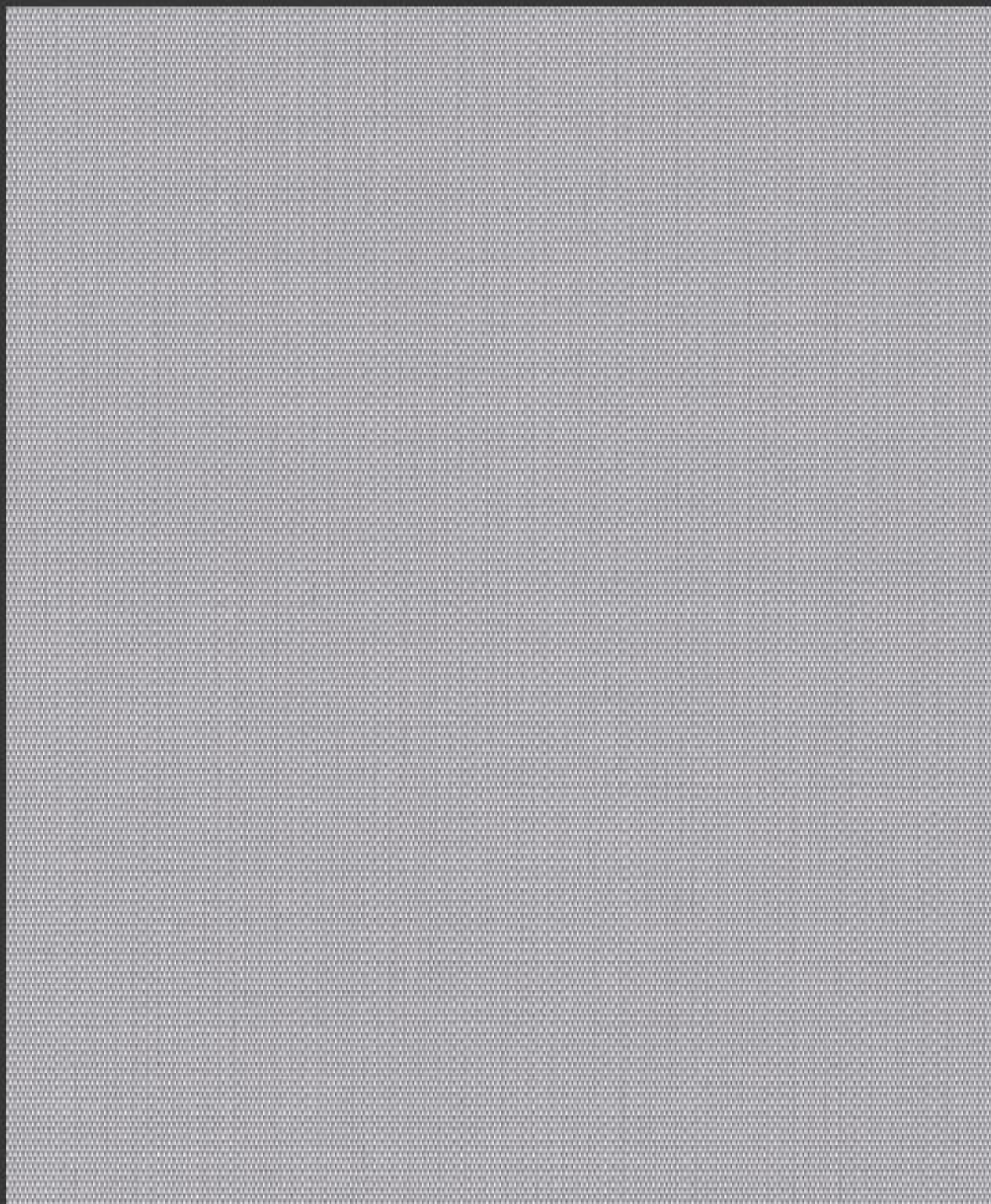
Recommended Comfort Classification				
Thermal Control	Visual			
	Daylight Utilization	Glare Control	Night Privacy	Outward Visibility

Kiev 3%

0101 White*White	16	65	19	72	13	55%	0.21
0102 White*Linen	15	59	26	63	11	49%	0.23
0103 White*Pearl	13	52	35	58	10	45%	0.25
0105 White*Grey	9	42	49	47	6	38%	0.26
0107 White*Sand	13	52	35	55	9	43%	0.25

2	2	1	2	0
2	2	1	2	0
2	2	1	2	0
2	2	1	2	1
2	2	1	2	0

Ts (Solar transmittance): Proportion of solar energy transmitted through the fabric. Rs (Solar reflectance): Proportion of solar radiation reflected by the fabric. As (Solar absorptance): Proportion of solar radiation absorbed by the fabric. Tv (Visible light transmittance): Total percentage of light radiation through the fabric over a wavelength of 380 to 780 nm. Rv (visible light reflectance): Total percentage of light radiation reflected by the fabric over a wavelength of 380 to 780 nm. SHGC (Total solar factor): Solar energy which actually penetrates into a room through the blind and glazing. A low value means good thermal performance. Comfort Classification According to EN14501: 0. Very little effect 1. Little effect 2. Moderate effect 3. Good effect 4. Very good effect



Kiev 3%

* OpennessFactor may be slightly different from the actual ones

Colors

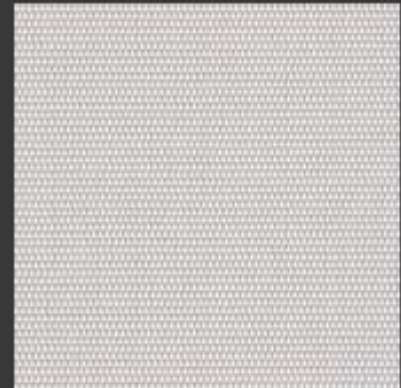
Kiev 3%



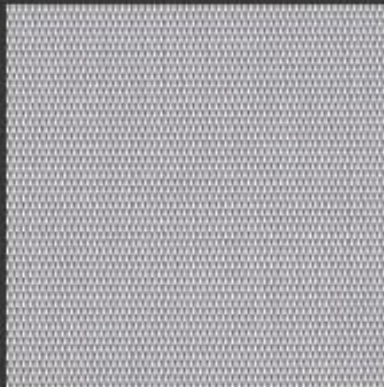
0101 White * White



0102 White * Linen



0103 White * Pearl



0105 White * Grey



0107 White * Sand

* Colours may be slightly different from the actual ones



External Basket

EB3 / EB5

Product Certificate

Fire, Smoke Classification	FR (US) - NFPA 701 TM#1 B1(CN) - GB50222	BS (GB) - 5867 Part2 TypeB
Health & Safety	Oeko-tex Standard 100 class IV RoHS Directive (EU)2015/863 AATCC112-2014	Greenguard® Gold EN71 Part 3:1994 GB18586 - 2001
Bacterial & Fungal Resistance	ASTM G21-09 ASTM E 2180-07 Reduce more than 99.9% of bacteria	
Colour fastness to light	Grade 8 ISO105 B02:2014 ≥ 4.0 AATCC TM 16.3-2014; Option 3; Xenon Arc Lamp	
Warranty	5 Years	



Technical Data

STYLE		B3	B5
Composition		26%Polyester 74% PVC	26%Polyester 74% PVC
Openness Factor		≈ 3%	≈ 5%
UV Screen		Up to 97%	Up to 94%
Width	inch	98"-118"	98"-118"
	cm	250-300	250-300
Weight	oz/yd ²	16.76 ± 5%	16.02 ± 5%
	(ISO 2286-2) g/m ²	570 ± 5%	545 ± 5%
Thickness	inch	0.031 ± 5%	0.030 ± 5%
	(ISO 2286-3) mm	0.80 ± 5%	0.75 ± 5%
Mechanical	Resistance		
Breaking (ISO 13934-1)	Warp	≥ 2100 N/5cm	≥ 2150 N/5cm
	Weft	≥ 2050 N/5cm	≥ 2000 N/5cm
Tear (ISO 4674)	Warp	≥ 220 N	≥ 200 N
	Weft	≥ 180 N	≥ 190 N
Packing (Roll Length)		32.8 yards 30 lm	32.8 yards 30 lm

Thermal and Optical Factors

Color	Fabric Properties					Fabric & Glass	
	Thermal			Optical		SHGC % Improvement	SHGC
	Ts	Rs	As	Rv	Tv		

Recommended Comfort Classification				
Thermal Control	Visual			
	Daylight Utilization	Glare Control	Night Privacy	Outward Visibility

External Basket 3%

0101 White*White	17	67	16	73	14	55%	0.22
0102 White*Linen	14	59	27	63	11	48%	0.23
0103 White*Pearl	13	52	35	57	10	44%	0.25
0105 White*Grey	9	41	50	45	7	36%	0.27
0107 White*Sand	13	52	35	54	10	42%	0.25
0403 Black*Pearl	6	15	79	17	5	20%	0.34
0404 Black*Black	5	3	92	3	5	13%	0.38
0404 Black*Grey	5	10	85	10	5	16%	0.36
0406 Black*Brown	5	6	89	6	5	14%	0.37

2	2	1	2	1
2	2	1	2	1
2	2	1	2	1
2	1	1	2	2
2	2	1	2	1
2	1	3	2	2
1	1	3	2	2
1	1	3	2	2
1	1	3	2	2

External Basket 5%

0101 White*White	23	66	11	72	20	54%	0.25
0102 White*Linen	16	58	26	61	13	46%	0.24
0103 White*Pearl	15	50	35	55	12	42%	0.26
0105 White*Grey	11	39	50	42	9	34%	0.28
0107 White*Sand	14	49	37	51	11	40%	0.27
0403 Black*Pearl	8	16	76	18	8	20%	0.35
0404 Black*Black	7	3	90	3	7	13%	0.38
0404 Black*Grey	6	11	83	10	6	16%	0.36
0406 Black*Brown	7	6	87	6	7	14%	0.37

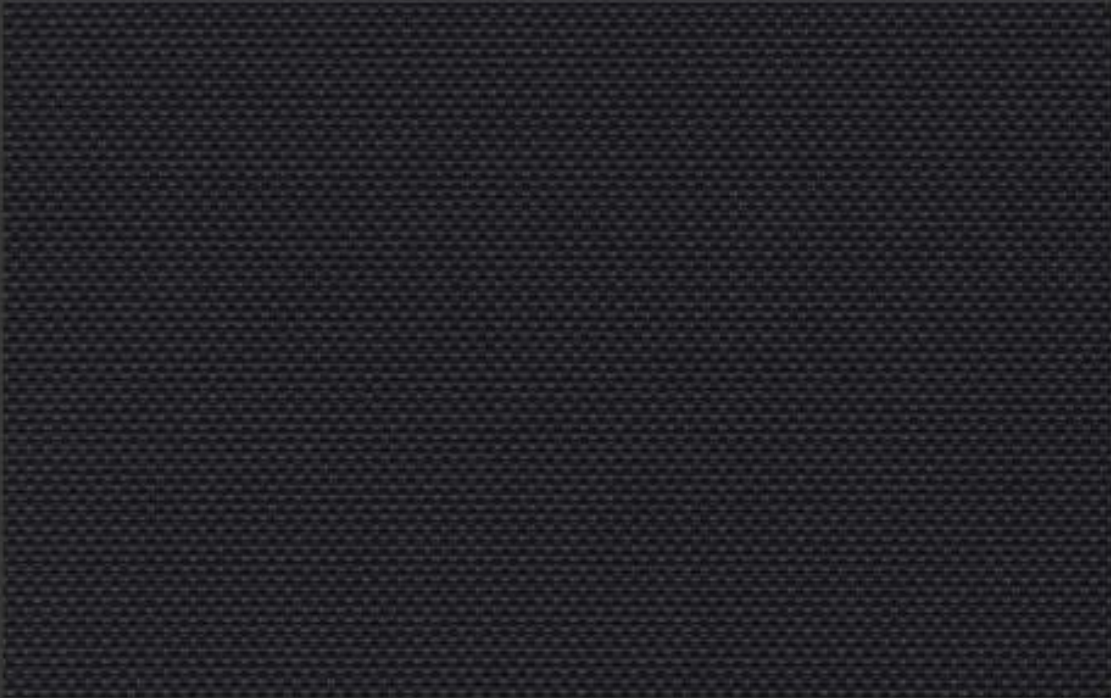
2	2	0	1	1
2	2	0	1	1
2	2	0	1	2
2	2	0	1	2
2	2	0	1	2
1	1	1	1	3
1	1	1	1	3
1	1	1	1	3
1	1	1	1	3

Ts (Solar transmittance): Proportion of solar energy transmitted through the fabric. Rs (Solar reflectance): Proportion of solar radiation reflected by the fabric. As (Solar absorptance): Proportion of solar radiation absorbed by the fabric. Tv (Visible light transmittance): Total percentage of light radiation through the fabric over a wavelength of 380 to 760 nm. Rv (Visible light reflectance): Total percentage of light radiation reflected by the fabric over a wavelength of 380 to 760 nm. SHGC (Total solar factor): Solar energy which actually penetrates into a room through the blind and glazing. A low value means good thermal performance. Comfort Classification According to EN14901: 0. Very little effect. 1. Little effect. 2. Moderate effect. 3. Good effect. 4. Very good effect.

Openness Factor

0404 Black™Black

EB 3%



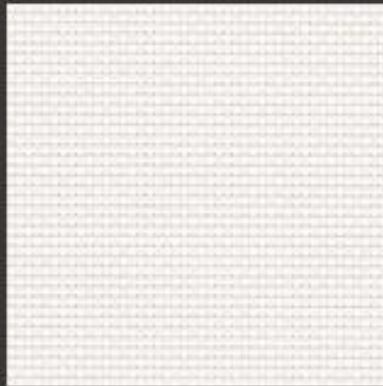
EB 5%



OpennessFactor may be slightly different from the actual ones

Colours

EB 3%



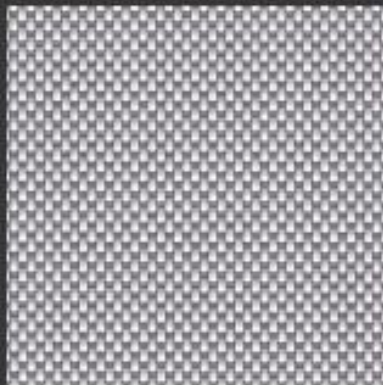
0101 White * White



0102 White * Linen



0103 White * Pearl



0105 White * Grey



0107 White * Sand



0403 Black * Pearl



0404 Black * Black



0404 Black * Grey



0406 Black * Brown

* Colours may be slightly different from the actual ones



Serge

Serge

Product Certificate

Fire, Smoke Classification	FR (US) - NFPA 701 TM#1 B1(CN) - GB50222	BS (GB) - 5867 Part2 TypeB
Health & Safety	Oeko-tex Standard 100 class IV RoHS Directive (EU)2015/863 AATCC112-2014	Greenguard® Gold EN71 Part 3:1994 GB18586 - 2001
Bacterial & Fungal Resistance	ASTM G21-09 ASTM E 2180-07	Reduce more than 99.9% of bacteria
Colour fastness to light	Grade 8 ISO105 B02:2014 ≥4.0 AATCC TM 16.3-2014; Option 3; Xenon Arc Lamp	
Warranty	5 Years	



Technical Data

STYLE		Serge
Composition		26% Polyester 74% PVC
Openness Factor		≈ 5%
UV Screen		Up to 95%
Width	inch	98" - 118"
	cm	250 - 300
Weight	oz/yd ²	17.35 ± 5%
	(ISO 2286-2) g/m ²	590 ± 5%
Thickness	inch	0.034 ± 5%
	(ISO 2286-3) mm	0.86 ± 5%
Mechanical	Resistance	
Breaking (ISO 13934-1)	Warp	≥ 2250 N/5cm
	Weft	≥ 1470 N/5cm
Tear (ISO 4674)	Warp	≥ 290 N
	Weft	≥ 235 N
Packing (Roll Length)	32.8 yards 30 Im	

Thermal and Optical Factors

Color	Side	Fabric Properties					Fabric & Glass	
		Thermal			Optical		SHGC % Improvement	SHGC
		Ts	Rs	As	Rv	Tv		

Recommended Comfort Classification				
Thermal Control	Visual			
	Daylight Utilization	Glare Control	Night Privacy	Outward Visibility

Serge 3%

0101 White*White	A	20	68	12	73	14	55%	0.20
0102 White*Linen	A	12	62	26	67	9	51%	0.21
	B	12	58	30	60	9	47%	0.23
0103 White*Pearl	A	10	56	34	62	8	48%	0.22
	B	10	49	41	53	8	42%	0.25
0105 White*Grey	A	7	47	46	51	5	41%	0.24
	B	7	35	58	37	5	32%	0.28
0107 White* Sand	A	10	56	34	58	7	46%	0.23
	B	10	48	42	48	7	39%	0.26

1	2	0	1	1
1	2	0	1	1
1	2	1	2	2
1	1	1	2	2
1	2	1	2	2

Ts (Solar transmittance): Proportion of solar energy transmitted through the fabric. Rs (Solar reflectance): Proportion of solar radiation reflected by the fabric. As (Solar absorptance): Proportion of solar radiation absorbed by the fabric. Tv (Visible light transmittance): Total percentage of light radiation through the fabric over a wavelength of 380 to 780 nm. Rv (visible light reflectance): Total percentage of light radiation reflected by the fabric over a wavelength of 380 to 780 nm. SHGC (Total solar factor): Solar energy which actually penetrates into a room through the blind and glazing. A low value means good thermal performance. Comfort Classification According to EN14501: 0. Very little effect 1. Little effect 2. Moderate effect 3. Good effect 4. Very good effect

Openness Factor

0107 White * Sand

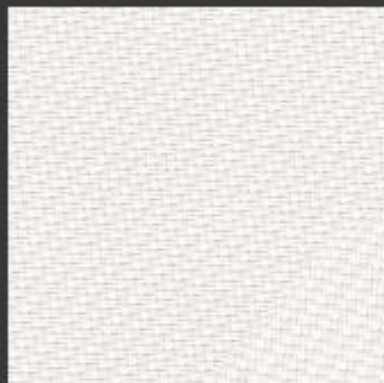


Serge 3%

OpennessFactor may be slightly different from the actual ones

Colours

Serge 3%



0101 White * White



0102 White * Linen



0103 White * Pearl



0105 White * Grey



0107 White * Sand

* Colours may be slightly different from the actual ones

Zebra

Zebra

Product Certificate

Fire, Smoke Classification	FR (US) - NFPA 701 TM#1 B1(CN) - GB50222	BS (GB) - 5867 Part2 TypeB
Health & Safety	Oeko-tex Standard 100 class IV RoHS Directive (EU)2015/863 AATCC112-2014	Greenguard® Gold EN71 Part 3:1994 GB18586 - 2001
Bacterial & Fungal Resistance	ASTM G21-09 ASTM E 2180-07 Reduce more than 99.9% of bacteria	
Colour fastness to light	Grade 8 ISO105 B02:2014 ≥4.0 AATCC TM 16.3-2014; Option 3; Xenon Arc Lamp	
Warranty	5 Years	



Technical Data

STYLE		Zebra	Zebra (Flax)
Composition		25%Polyester 75% PVC	19%Polyester 8%Flax 73% PVC
Openness Factor		≈65% / 0%	≈65% / 0%
UV Screen		Up to 99% / 35%	Up to 99% / 35%
Width	inch	98"-118"	98"-118"
	cm	250-300	250-300
Weight	oz/yd ²	8.82 ± 5%	8.55 ± 5%
(ISO 2286-2)	g/m ²	300 ± 5%	290 ± 5%
Thickness	inch	0.030 / 0.024 ± 5%	0.030 / 0.024 ± 5%
(ISO 2286-3)	mm	0.78 / 0.62 ± 5%	0.78 / 0.62 ± 5%
Mechanical	Resistance		
Breaking	Warp	≥2250 N/5cm	≥2250 N/5cm
(ISO 13934-1)	Weft	≥1470 N/5cm	≥1300 N/5cm
Tear	Warp	≥290 N	≥270 N
(ISO 4674)	Weft	≥235 N	≥215 N
Packing		32.8 yards	32.8 yards
(Roll Length)		30 lm	30 lm

Thermal and Optical Factors

Color	Side	Fabric Properties					Fabric & Glass		Recommended Comfort Classification				
		Thermal			Optical		SHGC % Improvement	SHGC	Thermal Control	Visual			
		Ts	Rs	As	Rv	Tv				Daylight Utilization	Glare Control	Night Privacy	Outward Visibility

Nova Twill 1%

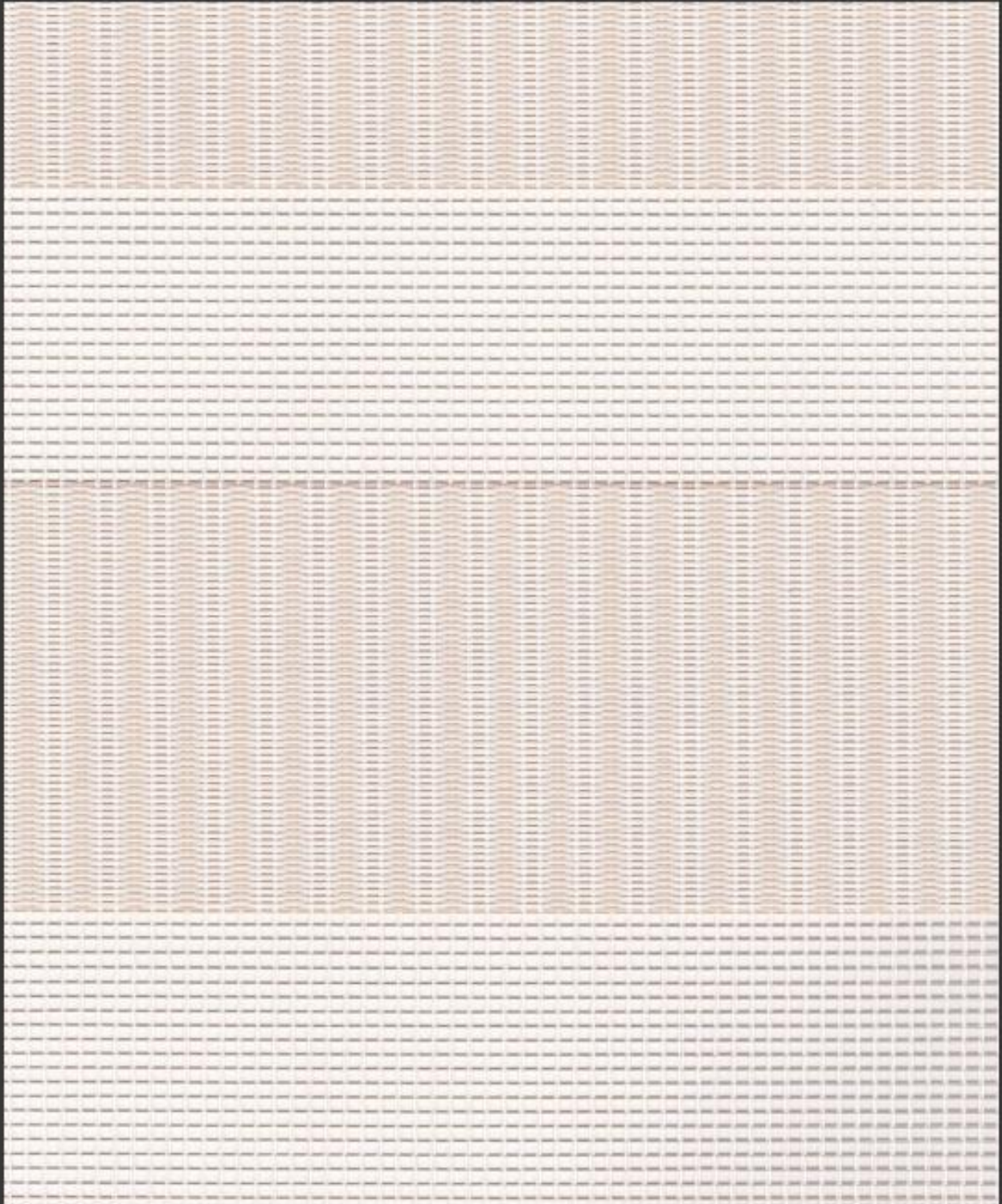
0101 White*White	A	70	19	11	21	69			2	2	2	3	2
	B	18	64	18	71	14	57%	0.23					
0102 White*Linen	A	70	18	12	20	69			2	2	2	3	2
	B	13	52	35	55	8	47%	0.25					
0103 White*Pearl	A	70	15	15	16	68			2	2	2	3	2
	B	9	46	45	50	6	44%	0.26					
0105 White*Grey	A	70	19	11	21	69			2	2	2	3	2
	B	15	59	26	64	11	52%	0.24					
0107 White* Sand	A	67	21	12	22	66			2	2	2	3	2
	B	17	62	21	65	15	52%	0.24					

Ts (Solar transmittance): Proportion of solar energy transmitted through the fabric. Rs (Solar reflectance): Proportion of solar radiation reflected by the fabric. As (Solar absorptance): Proportion of solar radiation absorbed by the fabric. Tv (Visible light transmittance): Total percentage of light radiation through the fabric over a wavelength of 380 to 780 nm. Rv (visible light reflectance): Total percentage of light radiation reflected by the fabric over a wavelength of 380 to 780 nm. SHGC (Total solar factor): Solar energy which actually penetrates into a room through the blind and glazing. A low value means good thermal performance.

Comfort Classification According to EN14501: 0: Very little effect 1: Little effect 2: Moderate effect 3: Good effect 4: Very good effect

Openness Factor

0313 White/White*Linene

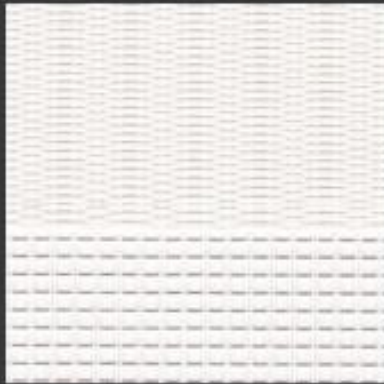


Zebra

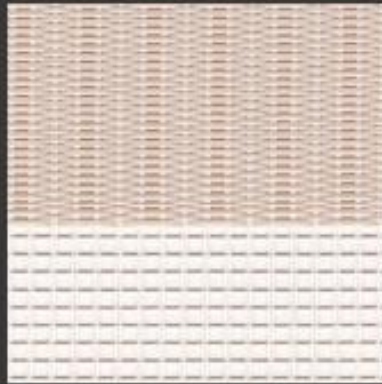
OpennessFactor may be slightly different from the actual ones

Colours

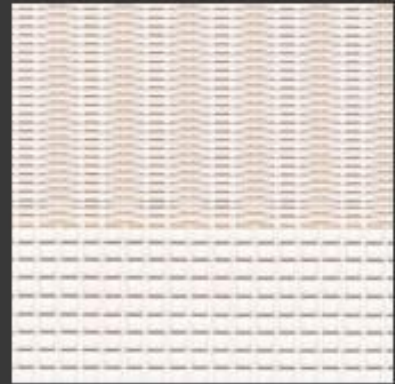
Zebra



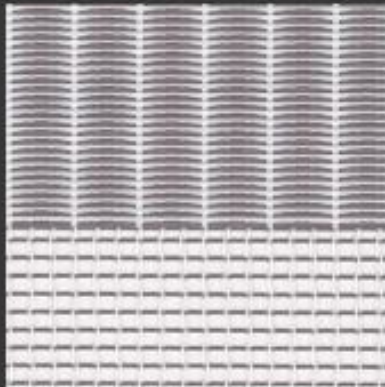
0101 White * White



0102 White * Linen



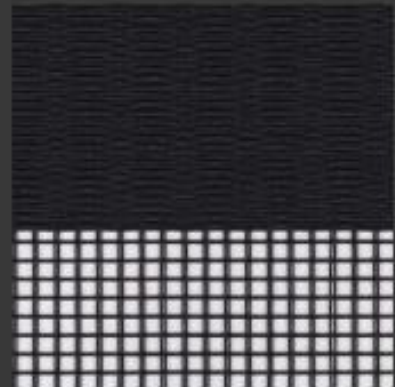
0313 White/Linen * Linen



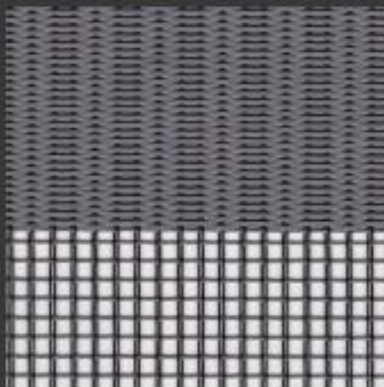
0105 White * Grey



0326 White/White * Flax

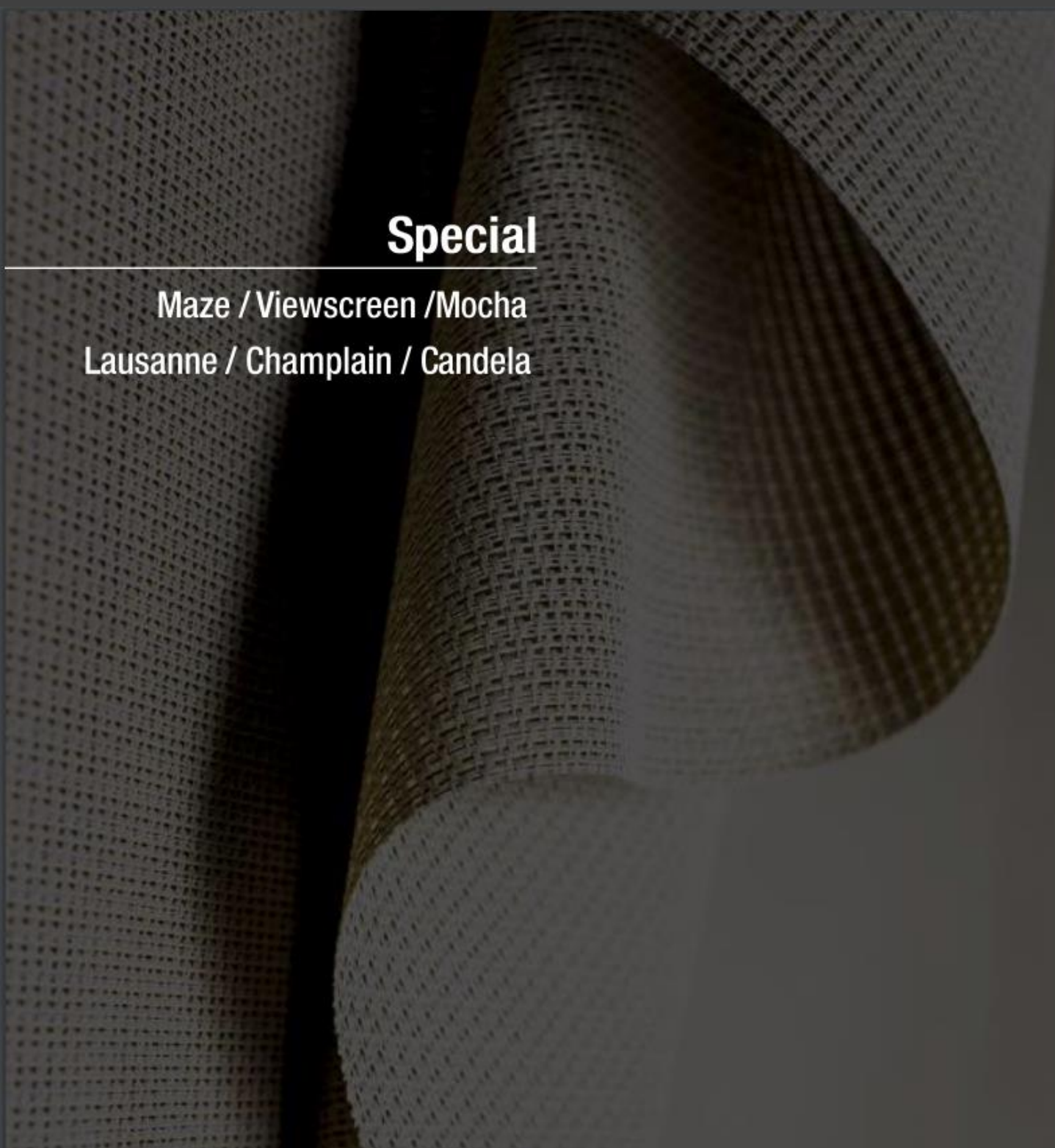


0404 Black * Black



0405 Black * Grey

* Colours may be slightly different from the actual ones



Special

Maze / Viewscreen / Mocha
Lausanne / Champlain / Candela

Product Certificate

Fire, Smoke Classification	FR (US) - NFPA 701 TM#1 B1(CN) - GB50222	BS (GB) - 5867 Part2 TypeB
Health & Safety	Oeko-tex Standard 100 class IV RoHS Directive (EU)2015/863 AATCC112-2014	Greenguard® Gold EN71 Part 3:1994 GB18586 - 2001
Bacterial & Fungal Resistance	ASTM G21-09 ASTM E 2180-07	Reduce more than 99.9% of bacteria
Colour fastness to light	Grade 8 ISO105 B02:2014 ≥4.0 AATCC TM 16.3-2014; Option 3; Xenon Arc Lamp	
Warranty	5 Years	



Technical Data

STYLE		Maze	Viewscreen	Mocha
Composition		26% Polyester 74% PVC	26% Polyester 74% PVC	27% Polyester 73% PVC
Openness Factor		≈9%	≈12%	≈12%
UV Screen		Up to 90%	Up to 88%	Up to 88%
Width	inch	118"	118"	114"
	cm	300	300	290
Weight	oz/yd ²	14.70±5%	13.38±5%	9.65±5%
	(ISO 2286-2) g/m ²	500 ± 5%	455 ± 5%	325 ± 5%
Thickness	inch	0.029 ± 5%	0.032 ± 5%	0.024 ± 5%
	(ISO 2286-3) mm	0.74 ± 5%	0.82 ± 5%	0.60 ± 5%
Mechanical	Resistance			
Breaking (ISO 13934-1)	Warp	≥ 1800 N/5cm	≥ 1800 N/5cm	≥ 1200 N/5cm
	Weft	≥ 1500 N/5cm	≥ 1000 N/5cm	≥ 700 N/5cm
Tear (ISO 4674)	Warp	≥ 160 N	≥ 190 N	≥ 160 N
	Weft	≥ 140 N	≥ 150 N	≥ 140 N
Packing (Roll Length)		32.8 yards 30 lm	32.8 yards 30 lm	32.8 yards 30 lm

Thermal and Optical Factors

Color	Side	Fabric Properties					Fabric & Glass		Recommended Comfort Classification				
		Thermal			Optical		SHGC % Improvement	SHGC	Thermal Control	Visual			
		Ts	Rs	As	Rv	Tv				Daylight Utilization	Glare Control	Night Privacy	Outward Visibility

Maze

0030 Linen	19	59	22	66	15	46%	0.26
0031 Black	10	37	53	43	14	42%	0.28
0032 Sand*Pearl	17	58	25	62	14	46%	0.26
0101 White	19	71	10	79	16	48%	0.25
0103 Pearl	18	56	26	63	15	46%	0.26
0107 Sand	18	60	22	61	13	46%	0.26

2	2	2	2	2
2	2	3	2	2
2	2	2	2	2
2	2	2	2	2
2	2	2	2	2
2	2	2	2	2

Viewscreen

0084 White	32	56	12	65	30	46%	0.26
0085 Beige	32	37	31	43	29	42%	0.28
0086 Black	18	8	74	10	18	38%	0.30
0087 Grey	17	13	70	22	17	38%	0.30
0088 Brown	20	14	66	16	20	38%	0.30

2	2	0	1	2
2	2	0	1	2
2	2	1	1	3
2	2	1	1	3
2	2	1	1	3

Mocha

0074 Papyrus	32	58	10	65	29	46%	0.26
0075 Tapioca	26	44	30	51	23	44%	0.27
0078 Safari	18	36	46	43	13	42%	0.28
0079 Cement	26	30	44	37	23	42%	0.28
0080 Otter	18	25	57	32	16	40%	0.29
0082 Dune	19	24	57	31	16	40%	0.29

2	2	2	1	2
2	2	2	1	2
2	2	1	1	2
2	2	2	1	2
2	2	1	1	2
2	2	1	1	2

Lausanne

0185 White*Linen	32	56	12	61	28	46%	0.26
0187 White*White	34	57	9	63	31	46%	0.26
0189 White*Sand	29	50	21	53	25	44%	0.27
0191 White*Pearl	30	52	18	57	26	46%	0.26

2	2	1	2	1
2	2	1	2	1
2	2	2	2	2
2	2	2	2	2

Champlain

0101 White*White	26	71	3	75	22	48%	0.25
0103 White*Pearl	24	51	25	58	22	40%	0.29
0104 White*Black	19	23	58	30	20	40%	0.29
0105 White*Grey	28	41	31	48	19	44%	0.27
0106 White*Brown	21	32	47	39	18	42%	0.28
0107 White*Sand	25	54	21	61	20	46%	0.26

2	2	0	0	3
2	2	0	0	3
2	2	1	0	3
2	2	1	0	3
2	2	1	0	3
2	2	0	0	3

Candela

0113 White*White	35	50	15	66	33	44%	0.27
0116 White*Black	21	36	43	41	20	42%	0.28
0119 White*Sand	33	39	28	55	30	42%	0.28

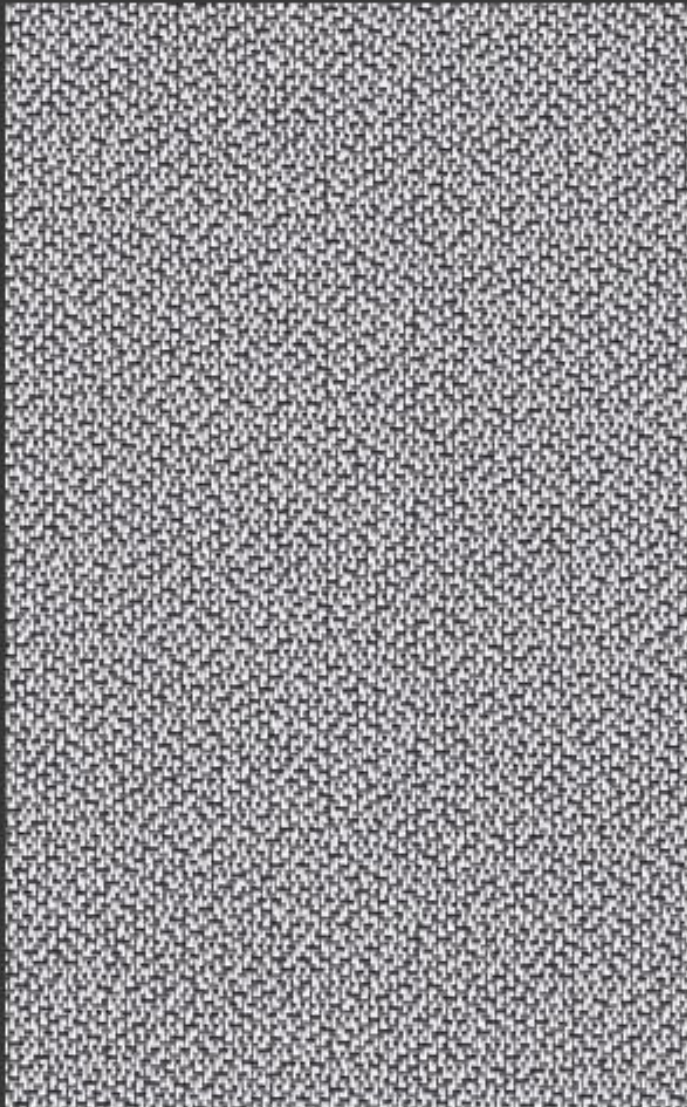
2	2	1	1	2
2	2	1	1	2
2	2	1	1	2

Ts (Solar transmittance): Proportion of solar energy transmitted through the fabric. Rs (Solar reflectance): Proportion of solar radiation reflected by the fabric. As (Solar absorptance): Proportion of solar radiation absorbed by the fabric. Tv (Visible light transmittance): Total percentage of light radiation through the fabric over a wavelength of 380 to 780 nm. Rv (visible light reflectance): Total percentage of light radiation reflected by the fabric over a wavelength of 380 to 780 nm. SHGC (Total solar factor): Solar energy which actually penetrates into a room through the blind and glazing. A low value means good thermal performance.

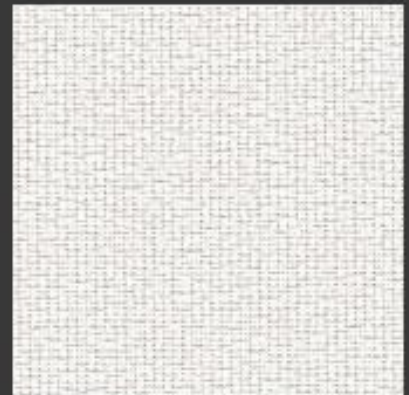
Comfort Classification According to EN14501: 0. Very little effect 1. Little effect 2. Moderate effect 3. Good effect 4. Very good effect

Colours

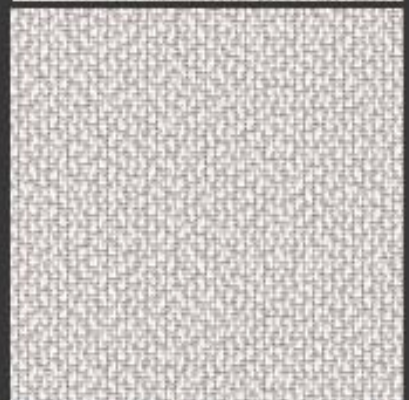
Maze



0031 Black



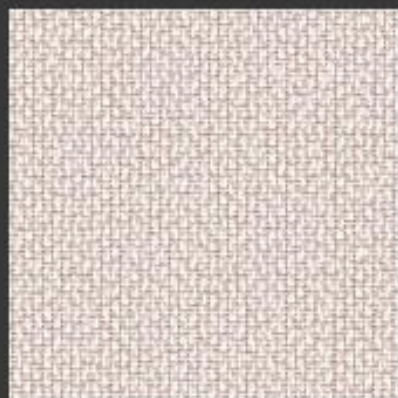
0101 White



0103 Pearl



0107 Sand



0030 Linen

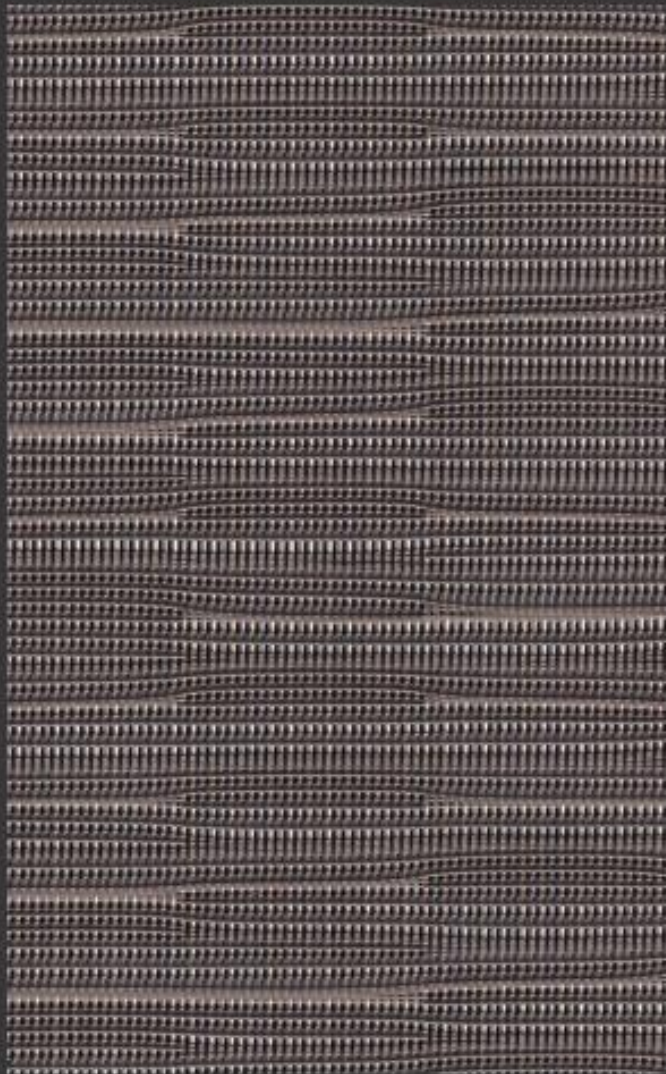


0032 Sand * Pearl

* Colours may be slightly different from the actual ones

Colours

Viewscreen



0088 Brown



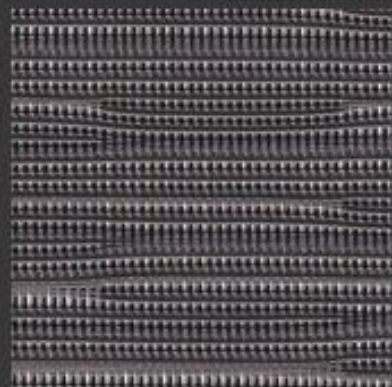
0084 White



0085 Beige



0086 Black



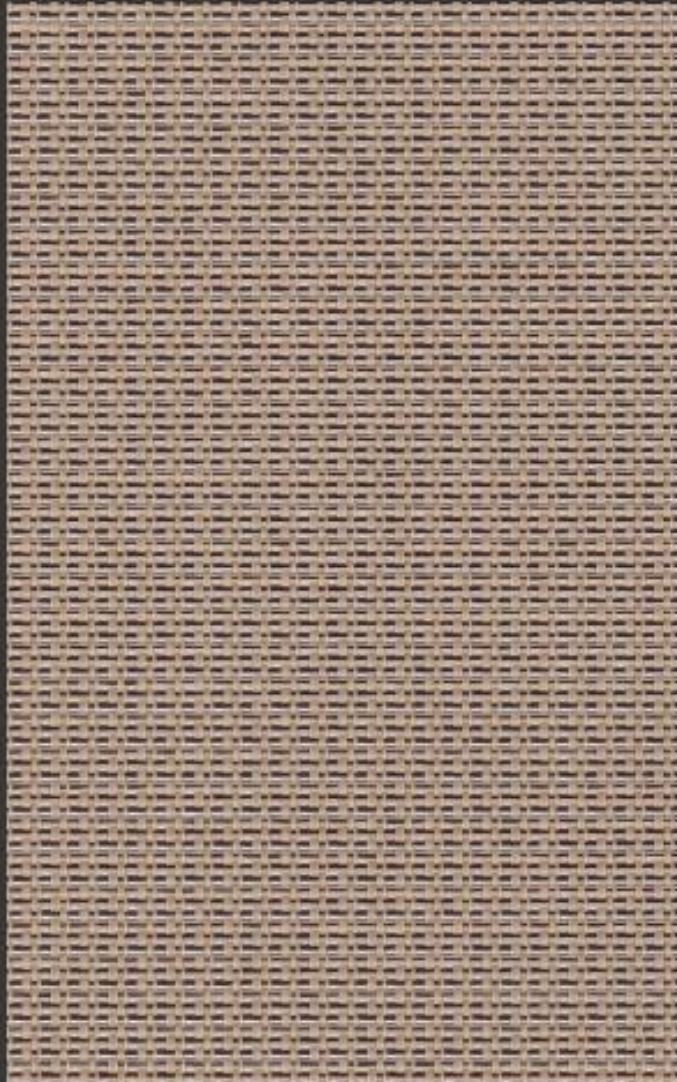
0087 Grey

* Colours may be slightly different from the actual ones



Colours

Mocha



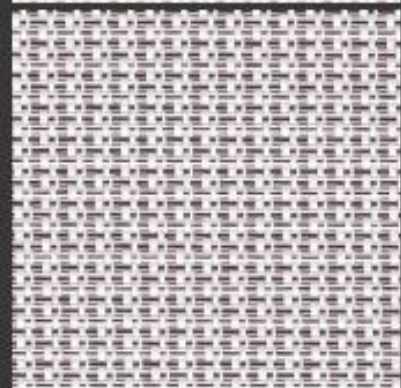
0079 Cement



0082 Dune



0074 Papyrus



0075 Tapioca



0078 Safari



0080 Otter

* Colours may be slightly different from the actual ones

Colours

Lausanne



0187 White*White

0185
White*Linen



0189
White*Sand



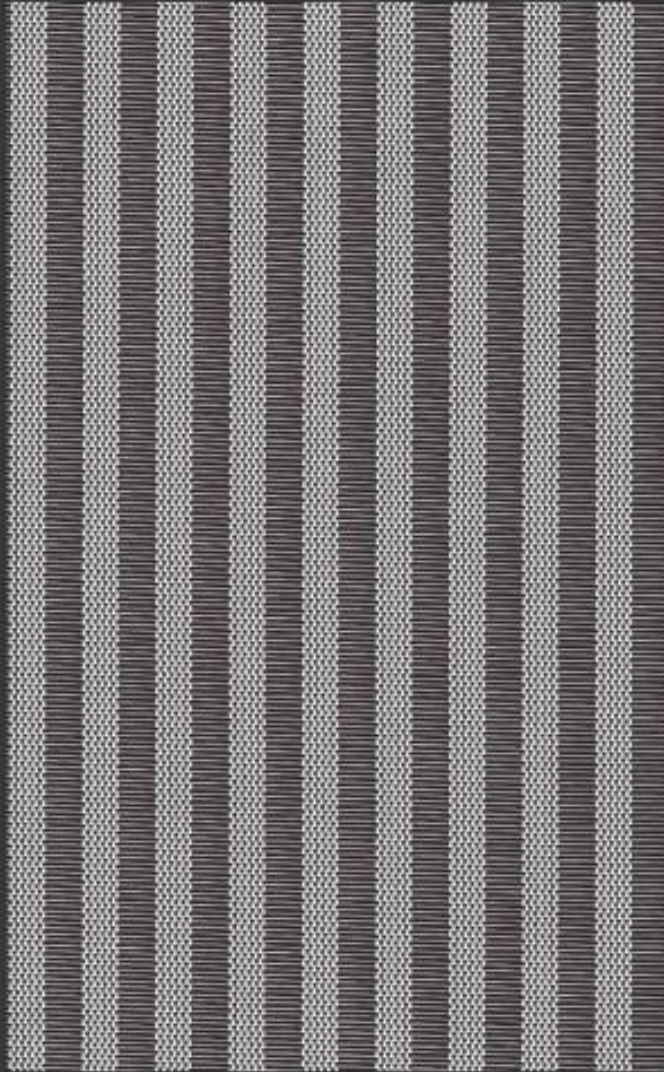
0191
White*Pearl



* Colours may be slightly different from the actual ones

Colours

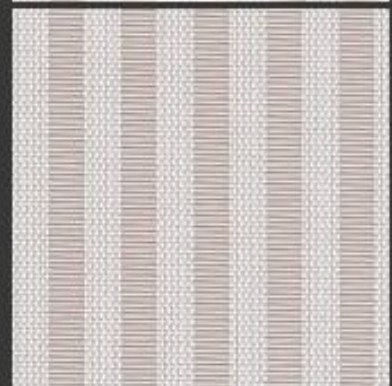
Champlain



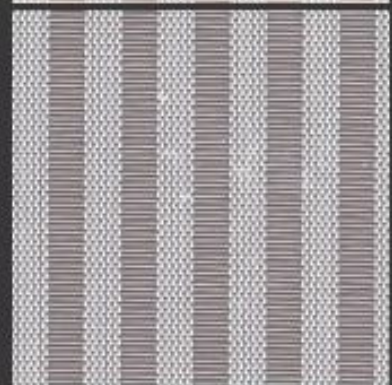
0104 White*Black



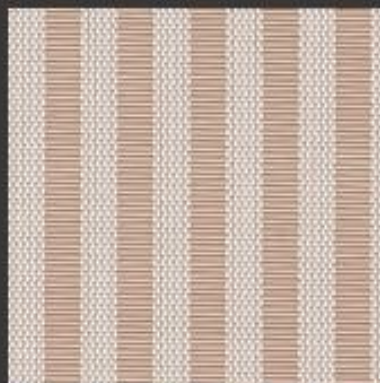
0101 White*White



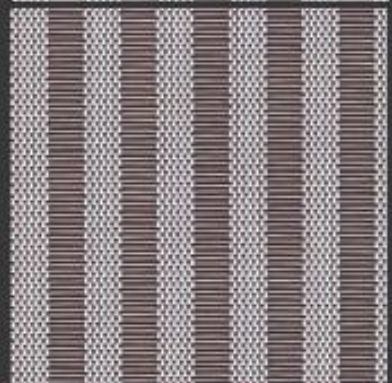
0103 White*Pearl



0105 White*Grey



0107 White*Sand



0106 White*Brown

* Colours may be slightly different from the actual ones

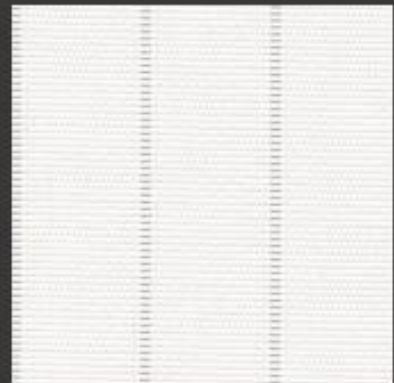
Colours

Candela

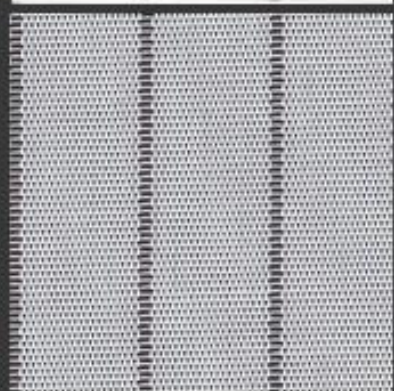


0119 White*Sand

0113
White*White



0116
White*Black



* Colours may be slightly different from the actual ones



New Product 2018

Convex / Morie /Kira
Sateen Twill / Sea Shore

Product Certificate

Fire, Smoke Classification	FR (US) - NFPA 701 TM#1 B1(CN) - GB50222	BS (GB) - 5867 Part2 TypeB
Health & Safety	Oeko-tex Standard 100 class IV RoHS Directive (EU)2015/863 AATCC112-2014	Greenguard® Gold EN71 Part 3:1994 GB18586 - 2001
Bacterial & Fungal Resistance	ASTM G21-09 ASTM E 2180-07 Reduce more than 99.9% of bacteria	
Colour fastness to light	Grade 8 ISO105 B02:2014 ≥4.0 AATCC TM 16.3-2014; Option 3; Xenon Arc Lamp	
Warranty	5 Years	



Technical Data

STYLE		Convex	Morie	Kira
Composition		25% Polyester 75% PVC	25% Polyester 75% PVC	25% Polyester 75% PVC
Openness Factor		≈5%	≈3%	≈3%
UV Screen		Up to 95%	Up to 97%	Up to 97%
Width	inch	98"-118"	98"-118"	98"-118"
	cm	250-300	250-300	25-300
Weight	oz/yd ²	12.94±5%	12.94±5%	14.41±5%
	(ISO 2286-2) g/m ²	440 ± 5%	440 ± 5%	490 ± 5%
Thickness	inch	0.030 ± 5%	0.030 ± 5%	0.030 ± 5%
	(ISO 2286-3) mm	0.77 ± 5%	0.77 ± 5%	0.76 ± 5%
Mechanical		Resistance		
Breaking	Warp	≥1750 N/5cm	≥1700 N/5cm	≥1700 N/5cm
	(ISO 13934-1) Weft	≥ 950 N/5cm	≥1000 N/5cm	≥1350 N/5cm
Tear	Warp	≥105 N	≥120 N	≥150 N
	(ISO 4674) Weft	≥ 60 N	≥ 75 N	≥115 N
Packing		32.8 yards	32.8 yards	32.8 yards
(Roll Length)		30 lm	30 lm	30 lm

Product Certificate

Fire, Smoke Classification	FR (US) - NFPA 701 TM#1 B1(CN) - GB50222	BS (GB) - 5867 Part2 TypeB
Health & Safety	Oeko-tex Standard 100 class IV RoHS Directive (EU)2015/863 AATCC112-2014	Greenguard® Gold EN71 Part 3:1994 GB18586 - 2001
Bacterial & Fungal Resistance	ASTM G21-09 ASTM E 2180-07 Reduce more than 99.9% of bacteria	
Colour fastness to light	Grade 8 ISO105 B02:2014 ≥4.0 AATCC TM 16.3-2014; Option 3; Xenon Arc Lamp	
Warranty	5 Years	



Technical Data

STYLE		Sateen Twill	Sea Shore
Composition		25% Polyester 75% PVC	25% Polyester 75% PVC
Openness Factor		≈3%	≈3%
UV Screen		Up to 97%	Up to 97%
Width	inch	98"-118"	98"-118"
	cm	250-300	250-300
Weight	oz/yd ²	14.11±5%	13.97±5%
	(ISO 2286-2) g/m ²	480 ± 5%	475 ± 5%
Thickness	inch	0.028 ± 5%	0.026 ± 5%
	(ISO 2286-3) mm	0.70 ± 5%	0.67 ± 5%
Mechanical	Resistance		
Breaking (ISO 13934-1)	Warp	≥1700 N/5cm	≥1750 N/5cm
	Weft	≥1180 N/5cm	≥1370 N/5cm
Tear (ISO 4674)	Warp	≥150 N	≥130 N
	Weft	≥115 N	≥95 N
Packing (Roll Length)		32.8 yards 30 lm	32.8 yards 30 lm

Thermal and Optical Factors

Color	Side	Fabric Properties					Fabric & Glass	
		Thermal			Optical		SHGC % Improvement	SHGC
		Ts	Rs	As	Rv	Tv		

Recommended Comfort Classification				
Thermal Control	Visual			
	Daylight Utilization	Glare Control	Night Privacy	Outward Visibility

Convex

0101 White*White	A	16	65	19	72	12	54%	0.22
0102 White*Linen	A	16	59	25	64	12	49%	0.24
0103 White*Pearl	A	14	53	33	58	11	45%	0.25
0104 White*Black	A	6	29	65	35	5	31%	0.29
0105 White*Grey	A	10	42	48	46	7	37%	0.27
0106 White*Bronze	A	7	35	58	40	5	34%	0.27
0107 White*Sand	A	14	52	34	55	10	43%	0.25

2	2	1	1	1
2	2	1	1	1
2	2	2	2	2
2	1	2	2	2
2	2	2	2	2
2	1	2	2	2
2	2	2	2	2

Moire

0101 White*White	A	19	64	17	71	16	32%	0.24
0102 White*Linen	A	17	58	25	62	13	35%	0.24
0103 White*Pearl	A	15	52	33	57	12	38%	0.25
0104 White*Black	A	7	27	66	32	6	49%	0.29
0105 White*Grey	A	11	40	49	44	8	43%	0.27
0106 White*Bronze	A	9	32	59	37	7	46%	0.28
0107 White*Sand	A	15	50	35	53	11	39%	0.26

2	2	1	1	1
2	2	1	1	1
2	2	2	2	2
2	1	2	2	2
2	2	2	2	2
2	1	2	2	2
2	2	2	2	2

Kira

0101 White*White	A	17	65	18	72	14	55%	0.22
0102 White*Linen	A	15	60	25	65	11	49%	0.24
0103 White*Pearl	A	5	54	41	60	4	47%	0.22
0104 White*Black	A	5	34	61	40	4	34%	0.32
0105 White*Grey	A	8	45	47	49	6	40%	0.28
0106 White*Bronze	A	6	38	56	43	4	36%	0.30
0107 White*Sand	A	13	54	33	57	9	44%	0.26

2	2	1	1	1
2	2	1	1	1
2	2	2	2	2
2	1	2	2	2
2	2	2	2	2
2	1	2	2	2
2	2	2	2	2

Sea Shore

0318 White*Pearl*Grey	A	12	46	42	51	9	40%	0.26
0319 White*White*Linen	A	16	62	22	68	13	51%	0.23
0320 White*Linen*Sand	A	14	55	31	58	10	45%	0.24
0321 White*Linen*Grey	A	12	49	39	53	8	42%	0.25
0322 White*White*Black	A	10	43	47	50	9	40%	0.27
0325 White*White*Sand	A	15	58	27	63	12	48%	0.24

2	1	2	1	2
2	2	1	1	1
2	2	1	1	1
2	1	2	1	2
2	1	2	1	2
2	2	1	1	1

Thermal and Optical Factors

Color	Side	Fabric Properties					Fabric & Glass	
		Thermal			Optical		SHGC % Improvement	SHGC
		Ts	Rs	As	Rv	Tv		

Recommended Comfort Classification				
Thermal Control	Visual			
	Daylight Utilization	Glare Control	Night Privacy	Outward Visibility

Sateen Twill

0101 White*White	A	17	67	16	73	14	55%	0.21
	B	17	66	17	73	14	55%	0.22
0102 White*Linon	A	13	62	25	67	10	51%	0.21
	B	13	57	30	59	10	46%	0.24
0103 White*Pearl	A	12	57	31	63	9	48%	0.23
	B	12	47	41	51	9	41%	0.26
0104 White*Black	A	4	37	59	43	3	36%	0.26
	B	4	15	81	17	3	21%	0.34
0105 White*Grey	A	15	48	37	57	7	45%	0.24
	B	11	52	37	36	7	31%	0.30
0106 White*Bronze	A	5	41	54	46	3	38%	0.25
	B	5	21	74	22	3	23%	0.32
0107 White*Sand	A	12	56	32	59	8	46%	0.23
	B	12	46	42	46	8	37%	0.27

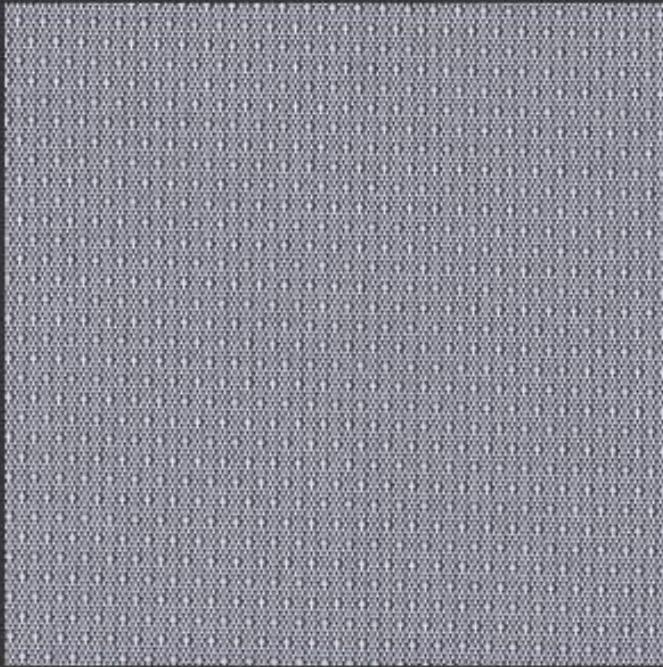
2	2	1	2	0
2	2	1	2	1
2	2	1	2	1
2	1	1	2	1
2	1	1	2	1
2	1	1	2	1
2	2	1	2	1

Ts (Solar transmittance): Proportion of solar energy transmitted through the fabric. Rs (Solar reflectance): Proportion of solar radiation reflected by the fabric. As (Solar absorptance): Proportion of solar radiation absorbed by the fabric. Tv (Visible light transmittance): Total percentage of light radiation through the fabric over a wavelength of 380 to 780 nm. Rv (visible light reflectance): Total percentage of light radiation reflected by the fabric over a wavelength of 380 to 780 nm. SHGC (Total solar factor): Solar energy which actually penetrates into a room through the blind and glazing. A low value means good thermal performance.

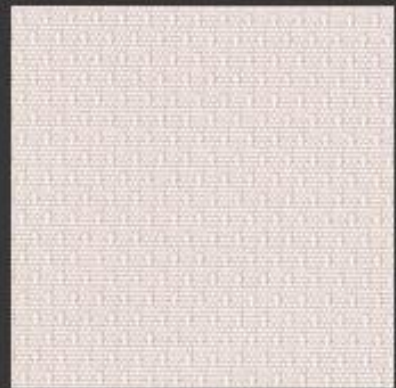
Comfort Classification According to EN14501: 0. Very little effect 1. Little effect 2. Moderate effect 3. Good effect 4. Very good effect

Colours

Convex

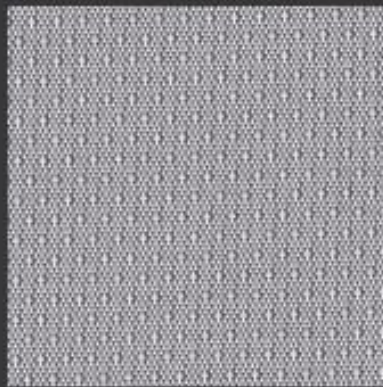


0101
White*White



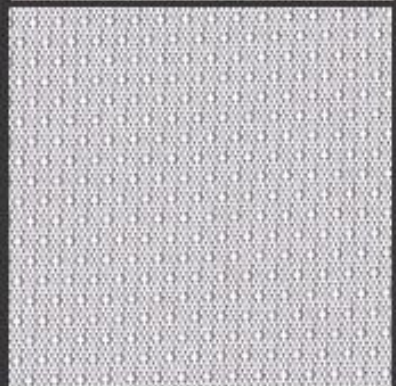
0102
White*Linen

0104 White*Black



0103
White*Pearl

0106
White*Brown



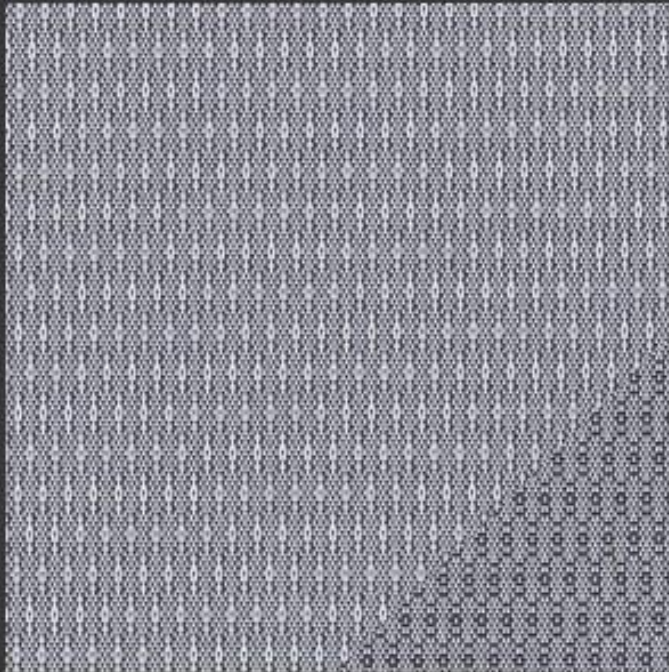
0105
White*Grey

0107
White*Sand

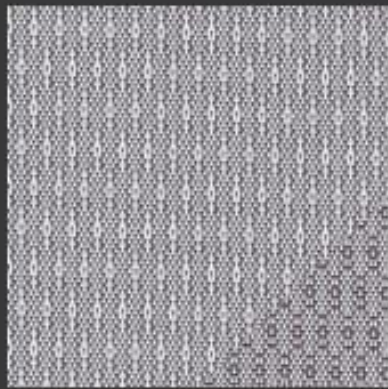
* Colours may be slightly different from the actual ones

Colours

Morie



0104 White*Black



0106
White*Bronze



0107
White*Sand

0101
White*White



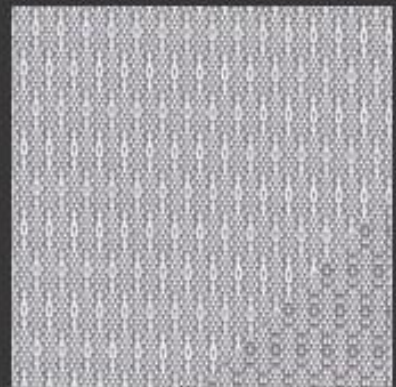
0102
White*Linen



0103
White*Pearl



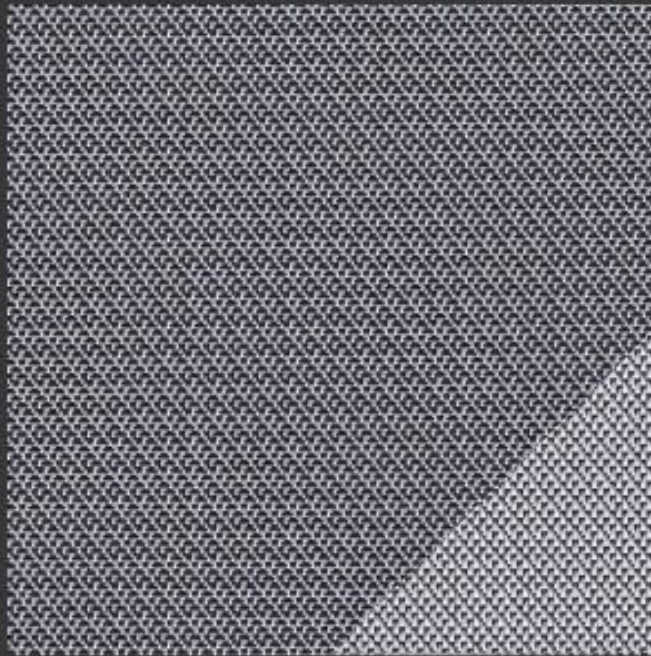
0105
White*Grey



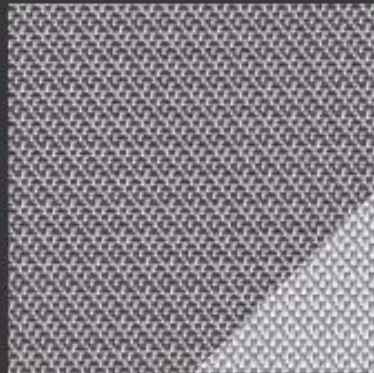
* Colours may be slightly different from the actual ones

Colours

Kira



0104 White*Black



0106
White*Bronze



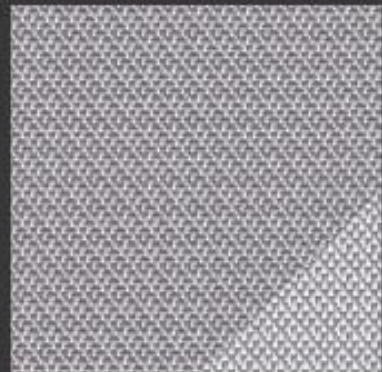
0107
White*Sand

0101
White*White

0102
White*Linen

0103
White*Pearl

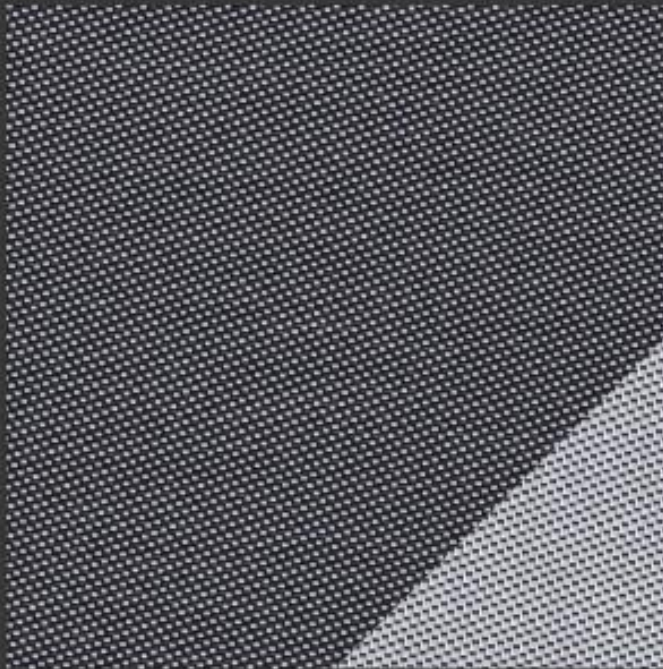
0105
White*Grey



* Colours may be slightly different from the actual ones

Colours

Sateen Twill



0104 White*Black

0101
White*White



0102
White*Linen



0106
White*Bronze



0103
White*Pearl



0107
White*Sand



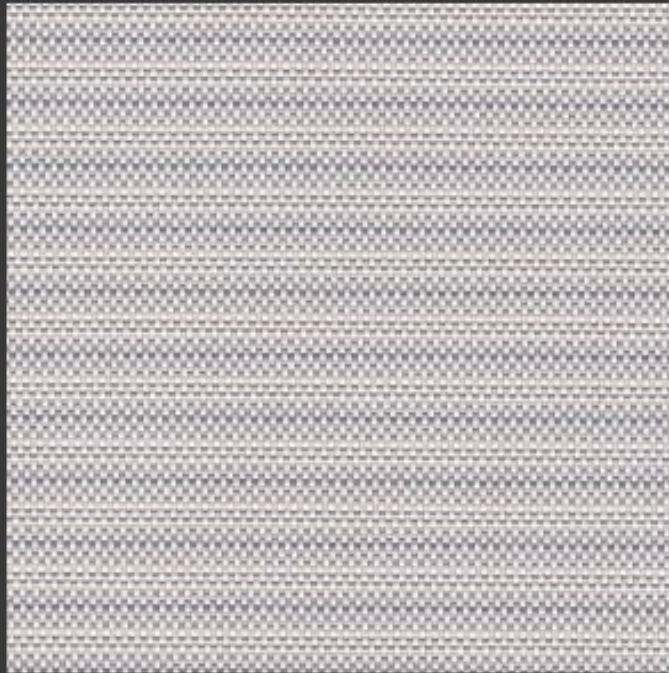
0105
White*Grey



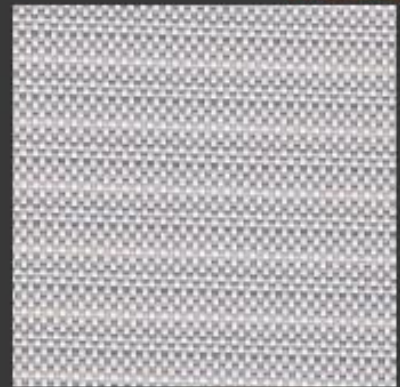
* Colours may be slightly different from the actual ones

Colours

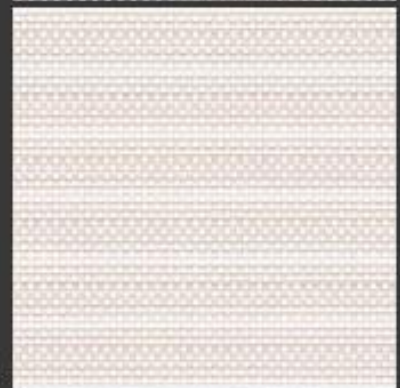
Sea Shore



0321 White/Linen*Grey



0318
White/Pearl*Grey



0319
White/White*Linon



0319
White/White*Sand



0320
White/Linen*Sand



0322
White/White*Black

* Colours may be slightly different from the actual ones